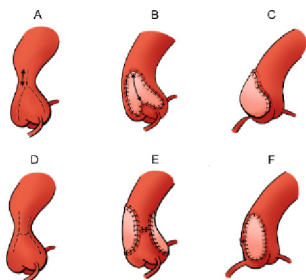


Congenital Articles in AATS Journals

Readers who found these articles interesting may also like to read these congenital papers that can be found in recent issues of AATS journals.

CONGENITAL

Aorta

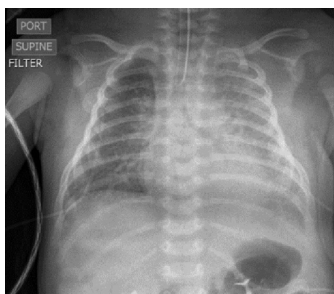


JTCVS TECHNIQUES SURGICAL TECHNIQUE: H-repair in supravalvular aortic stenosis.

Luo S, Haller C, Deng MX, Honjo O. J Thorac Cardiovasc Surg Tech. 2021; in press.

Commentary: When is less more? *Sinha P. J Thorac Cardiovasc Surg Tech. 2021; in press.*

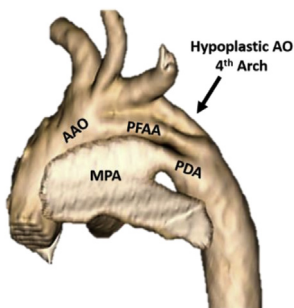
Commentary: Sometimes the best solution is simplification. *Alsoufi B. J Thorac Cardiovasc Surg Tech. 2021; in press.*



JTCVS TECHNIQUES CASE REPORT: Neonatal repair of unilateral pulmonary vein atresia with associated coarctation of the aorta. *Chiu P, Tede N, Maeda K. J Thorac Cardiovasc Surg Tech. 2020 [In press].*

Commentary: If more is no good, then less is more. *Alsoufi B, Kozik DJ. J Thorac Cardiovasc Surg Tech. 2020 [In press].*

Commentary: Neonatal pneumonectomy for unilateral pulmonary venous atresia; simple lessons in unusual times. *Anagnostopoulos PV. J Thorac Cardiovasc Surg Tech. 2020 [In press].*

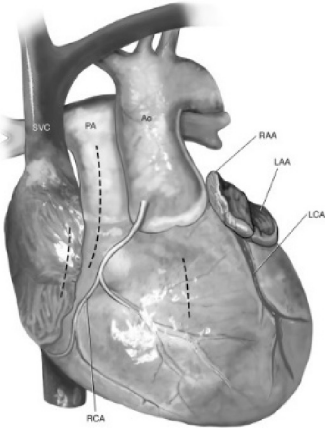


JTCVS TECHNIQUES CASE REPORT: Neonatal repair of persistent fifth aortic arch and aortic coarctation. *Sebastian V, Divekar AA. J Thorac Cardiovasc Surg Tech. 2020 [In press].*

Commentary: Commentary: If it looks like a duct and it cracks like a duct it most likely is a duct. *Al-Radi OO. J Thorac Cardiovasc Surg Tech. 2020 [In press].*

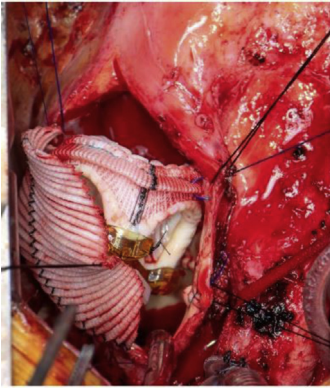
Congenital Articles in AATS Journals

Arterial Switch Operation



OPTechs: Atrioventricular groove patch plasty as part of Konno operation after arterial switch operation. *Kurosawa H. Oper Tech Thorac Cardiovasc Surg. 2020; in press.*

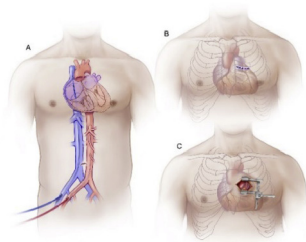
Pulmonary Valve



STCVS: Durability of the St. Jude Epic Supra Bioprosthetic Valve in the Pulmonary Position. *Spigel ZA, Zhu H, Qureshi AM, Caldarone CA, Heinle JS, Binsalamah ZM. Sem Thorac Cardiovasc Surg. 2020 [in press].*

Commentary: The pursuit of the unicorn continues! *Ashfaq A, Morales DLS. Sem Thorac Cardiovasc Surg. 2020 [in press].*

Commentary: Epic supra valve just as good for pulmonary valve replacement – But is it good enough? *Sem Thorac Cardiovasc Surg. 2020 [in press].*

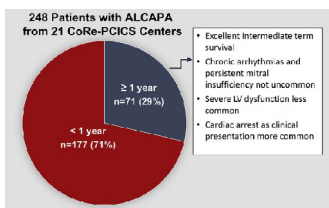


JTCVS TECHNIQUES SURGICAL TECHNIQUE: Minimally invasive pulmonary valve replacement via left anterior minithoracotomy. *Said SM. J Thorac Cardiovasc Surg Tech. 2020; in press.*

Commentary: Minimally invasive pulmonary valve replacement and the adoption curve for novel techniques. *Nellis JR, Turek JW, Andersen ND. J Thorac Cardiovasc Surg Tech. 2020; in press.*

Commentary: Pulmonary valve replacement through a small incision is attractive but means limited possibilities for right ventricular outflow tract repair. *Carrel T. J Thorac Cardiovasc Surg Tech. 2020; in press.*

Anomalous Left Coronary Artery



STCVS: Characteristics and Surgical Outcomes of Patients With Late Presentation of Anomalous Left Coronary Artery From the Pulmonary Artery: A Multicenter Study. *Kwiatkowski DM, Mastropietro CW, Cashen K, Smerling J, Costello JM. Semin Thorac Cardiovasc Surg. 2021; 33(1); 141-150.*

Commentary: Another Look at Late-Presentation of Anomalous Left Coronary From the Pulmonary Artery - What Have We Learned? *Chai PJ. Semin Thorac Cardiovasc Surg. 2021; 33(1); 151-152.*

Commentary: Anecdotes Generate Questions, Not Answers. *Alsoufi B. Semin Thorac Cardiovasc Surg. 2021; 33(1); 153-154.*