

Discharge Location and Outcomes After Transcatheter Aortic Valve Implantation



Romy Sweda, MD^{a,1}, Stephan Dobner, MD, PhD^{a,*}, Dik Heg, PhD^b, Jonas Lanz, MD, MSc^a, Daniel Malebranche, MD^a, Bettina Langhammer, MD^c, Taishi Okuno, MD^a, Fabien Praz, MD^a, Lorenz Räber, MD, PhD^a, Marco Valgimigli, MD, PhD^a, David Reineke, MD^c, Thomas Pilgrim, MD, MSc^a, Stephan Windecker, MD^a, and Stefan Stortecky, MD^{a,*}

The relation between discharge location and outcomes after transcatheter aortic valve implantation (TAVI) is largely unknown. Thus, the objective of this study was to investigate the impact of discharge location on clinical outcomes after TAVI. Between August 2007 and December 2018, consecutive patients who underwent transfemoral TAVI at Bern University Hospital were grouped according to discharge location. Clinical adverse events were adjudicated according to VARC-2 end point definitions. Of 1,902 eligible patients, 520 (27.3%) were discharged home, 945 (49.7%) were discharged to a rehabilitation clinic and 437 (23.0%) were transferred to another institution. Compared with patients discharged to a rehabilitation facility or another institution, patients discharged home were younger (80.8 ± 6.5 vs 82.9 ± 5.4 and 82.8 ± 6.4 years), less likely female (37.3% vs 59.7% and 54.2%), and at lower risk according to STS-PROM ($4.5 \pm 3.0\%$ vs $5.5 \pm 3.8\%$ and $6.6 \pm 4.4\%$). At 1 year follow-up, patients discharged home had similar rates of all-cause mortality (HR_{adj} 0.82; 95% CI 0.54 to 1.24), cerebrovascular events (HR_{adj} 1.04; 95% CI 0.52 to 2.08) and bleeding complications (HR_{adj} 0.93; 95% CI 0.61 to 1.41) compared with patients discharged to a rehabilitation facility. Patients discharged home or to rehabilitation were at lower risk for death (HR_{adj} 0.37; 95% CI 0.24 to 0.56 and HR_{adj} 0.44; 95% CI 0.32 to 0.60) and bleeding (HR_{adj} 0.48; 95% CI 0.30 to 0.76 and HR_{adj} 0.66; 95% CI 0.45 to 0.96) during the first year after hospital discharge compared with patients transferred to another institution. In conclusion, discharge location is associated with outcomes after TAVI with patients discharged home or to a rehabilitation facility having better clinical outcomes than patients transferred to another institution.

Clinical Trial Registration: <https://www.clinicaltrials.gov>. NCT01368250. © 2020 Elsevier Inc. All rights reserved. (Am J Cardiol 2021;140:95–102)

A structured approach to peri-operative care facilitates early recovery in patients who underwent open-heart surgery and may reduce postoperative adverse events and hospital length of stay.¹ After hospital discharge, dedicated inpatient cardiac rehabilitation programs offer uninterrupted care following cardiac surgery to ensure appropriate wound care, improve mobilization, and restore physical strength. Moreover, cardiac rehabilitation is associated with a relevant reduction in all-cause mortality after coronary artery bypass graft surgery,² and a substantial improvement in physical capacity after heart valve surgery.³ During the last decade, transcatheter aortic valve implantation (TAVI) has emerged as therapeutic alternative to surgical aortic valve replacement among symptomatic patients with severe aortic stenosis across the surgical spectrum of risk.⁴ The

substantially lower degree of invasiveness associated with TAVI has led to the evolution of clinical care pathways that ultimately serve to streamline hospital stay, reduce health service utilization, and improve clinical outcomes.^{5,6} Adherence to such protocols is associated with effective early ambulation thus facilitating next-day home-discharge in up to 80% of patients who underwent TAVI.⁷ The relation between discharge location and outcomes in patients who underwent transfemoral TAVI has been insufficiently investigated yet, and is the aim of the present study.

Methods

Between August 2007 and December 2018, consecutive patients who underwent transfemoral TAVI at Bern University Hospital were entered into the Bern TAVI Registry, which is part of the SwissTAVI Registry (ClinicalTrials.gov identifier NCT01368250).⁸ Patient selection, the procedure, and postprocedural care were performed according to local standards and expertise, and followed the recommendation of the multidisciplinary Heart Team. After TAVI, patients were routinely monitored in an intermediate care unit for a duration of 24 to 48 hours before being transferred to a cardiology ward. From the ward service, patients were either discharged to their home, to a rehabilitation facility,

^aDepartment of Cardiology, Inselspital, Bern University Hospital, University of Bern, Bern, Switzerland; ^bCTU Bern, University of Bern, Bern, Switzerland; and ^cDepartment of Cardiovascular Surgery, Inselspital, Bern University Hospital, University of Bern, Bern, Switzerland. Manuscript received August 24, 2020; revised manuscript received and accepted October 16, 2020.

¹Drs. Sweda and Dobner contributed equally to this manuscript.

See page 101 for disclosure information.

*Corresponding author. Tel: (+41 31) 632 83 52; fax: (+41 31) 664 10 69
E-mail address: stefan.stortecky@insel.ch (S. Stortecky).

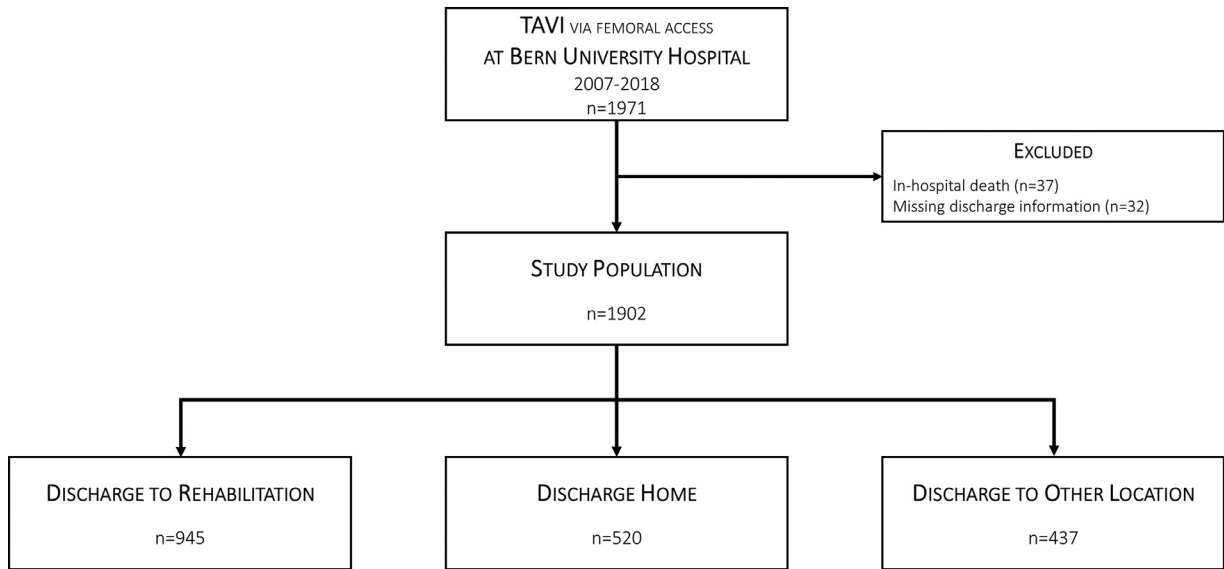


Figure 1. Patient Flow Diagram.

or transferred to the referring regional hospital or another institution. There were no predefined disposition criteria and decisions were made on a case to case basis according to medical requirements and personal preferences. The option to participate in a rehabilitation program was offered to all patients and routinely discussed before the intervention

as part of the preprocedural disposition planning. The Bern University Clinical Trials Unit was responsible for central data monitoring and statistical analysis. The study protocol, which was approved by the national ethics committee, was conducted in accordance with the Declaration of Helsinki, and all patients provided written informed consent.

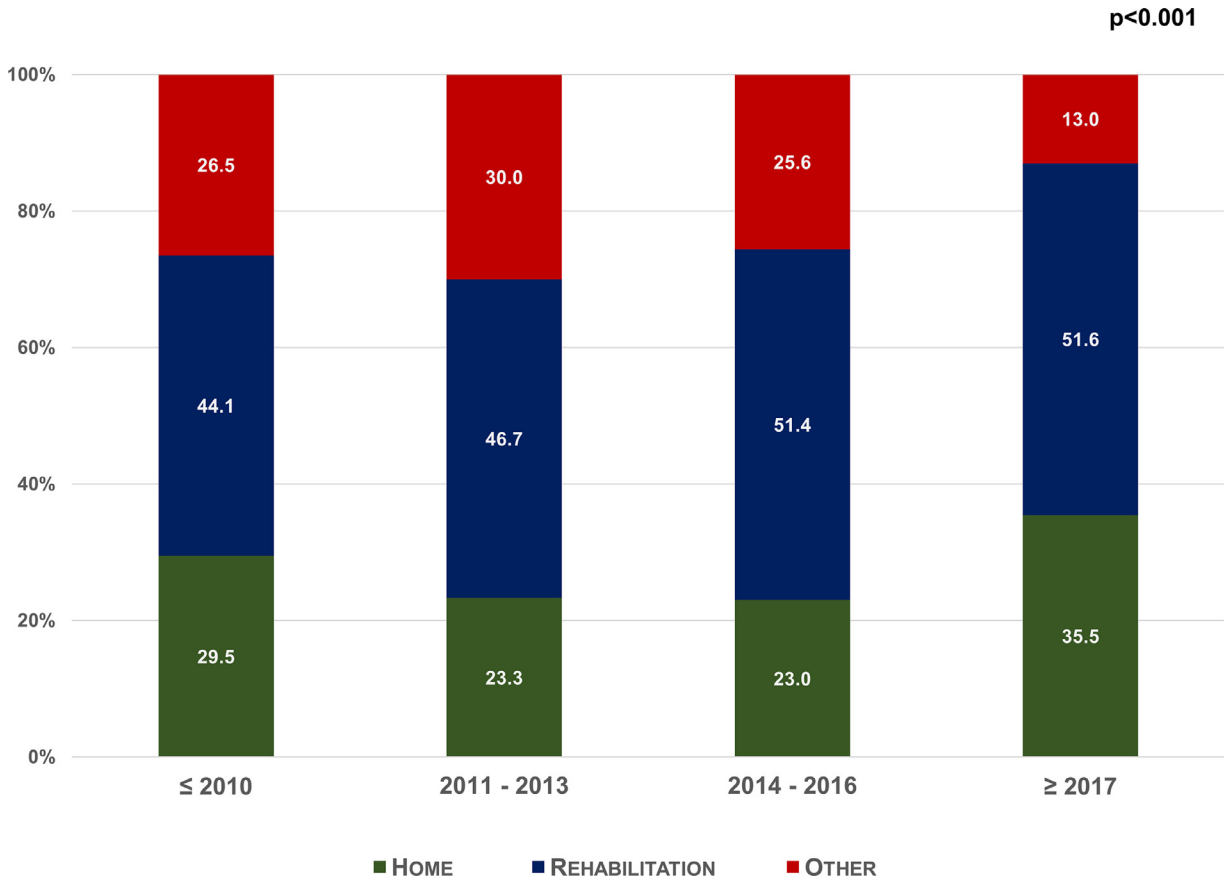


Figure 2. Discharge location over time.

Clinical follow-up and echocardiographic assessment were scheduled at 30 days and 1 year after TAVI. Serious adverse events occurring during the follow-up period were reviewed by an independent clinical event committee and adjudicated according to the recommendations of the Valve Academic Research Consortium.⁹ The primary end point of the study was all-cause mortality at 1 year.

Baseline and procedural characteristics are presented as means (\pm standard deviation) and counts (%). Continuous variables were compared with *t* tests, and Fisher's tests. Categorical variables were compared using chi-square tests, pairwise across the discharge groups. Clinical outcomes from discharge to 1 year of follow-up (censoring at death, loss to follow-up, or withdrawal of consent) are presented as counts of the first event of each outcome according to discharge location (% from life-table estimates). These outcomes were compared pairwise across the discharge groups using Cox's regressions. Hazard ratios are presented with 95% confidence intervals (CI). This was repeated using adjusted Cox regressions, where pairwise hazard ratios were adjusted for age, gender, Society of Thoracic Surgeons Predicted Risk of Mortality (STS PROM), history of atrial fibrillation, left ventricular ejection fraction, year of TAVI (≤ 2010 , 2011 to 2013, >2014); regurgitation of aortic, mitral and tricuspid valves; and peri-procedural events: cerebrovascular events, vascular complications, life-threatening or major bleeding, acute kidney injury stage 2 or 3; number of days in the hospital before discharge

(≤ 3 vs 4 to 6 vs 7 to 10 vs >10 days). We assumed no risk for missing variables; no adjusted analyses with less than ten events. The outcome analysis was then repeated for pairwise matched-cohorts of discharge groups, using the following variables for propensity score matching: age, gender, STS PROM, atrial fibrillation, left ventricular ejection fraction, year of TAVI (≤ 2010 , 2011 to 2013, >2014); regurgitation of aortic, mitral and tricuspid valves; and index hospitalization events: cerebrovascular events, vascular complications, life-threatening or major bleeding, acute kidney injury stage 2 or 3; number of days in the hospital before discharge (≤ 3 vs 4 to 6 vs 7 to 10 vs >10 days).

Results

Between August 2007 and December 2018, 1,971 patients underwent transfemoral TAVI. Among the 1,902 study subjects, 49.7% of patients were discharged to a rehabilitation facility, 27.3% were discharged home and 23.0% were transferred to another institution (Figure 1). Changes in hospital discharge disposition during the study period and according to the year of treatment are displayed in Figure 2. Over time, rates of hospital discharge to a rehabilitation facility increased (2007 to 2010 44.1%; ≥ 2017 51.6%), whereas rates of discharge to another institution declined (2007 to 2010 35.4%; ≥ 2017 13.0%) ($p < 0.001$).

Baseline clinical characteristics of the study population are provided in Table 1. Patients discharged home were

Table 1
Baseline clinical characteristics

Variable	All patients (N = 1902)	Home (N = 520)	Rehabilitation (N = 945)	Other (N = 437)	pairwise p-value		
					Home vs Rehab	Home vs Other	Rehab vs Other
Age (years)	82.3 \pm 6.0	80.8 \pm 6.5	82.9 \pm 5.4	82.8 \pm 6.4	<0.001	<0.001	0.90
Women	995 (52.3%)	194 (37.3%)	564 (59.7%)	237 (54.2%)	<0.001	<0.001	0.06
Body mass index (kg/cm ²)	26.6 \pm 5.3	26.7 \pm 5.2	26.5 \pm 5.4	26.7 \pm 5.1	0.38	0.99	0.40
Diabetes mellitus	491 (25.8%)	133 (25.6%)	237 (25.1%)	121 (27.7%)	0.85	0.46	0.32
Previous pacemaker implantation	162 (8.5%)	52 (10.0%)	73 (7.7%)	37 (8.5%)	0.14	0.44	0.67
History of myocardial infarction	284 (14.9%)	78 (15.0%)	129 (13.7%)	77 (17.6%)	0.48	0.29	0.06
History of cardiac surgery	237 (12.5%)	87 (16.7%)	106 (11.2%)	44 (10.1%)	0.004	0.003	0.58
History of cerebrovascular accident	217 (11.4%)	47 (9.0%)	113 (12.0%)	57 (13.0%)	0.096	0.06	0.60
Peripheral artery disease	185 (9.7%)	48 (9.2%)	85 (9.0%)	52 (11.9%)	0.92	0.20	0.10
COPD	219 (11.5%)	65 (12.5%)	95 (10.1%)	59 (13.5%)	0.16	0.70	0.066
Coronary artery disease	1153 (60.6%)	332 (63.8%)	551 (58.3%)	270 (61.8%)	0.039	0.55	0.24
Echocardiographic Parameters							
LVEF (%)	54.8 \pm 13.5	55.4 \pm 12.8	55.5 \pm 13.5	52.4 \pm 14.3	0.92	0.003	0.001
Aortic valve area (cm ²)	0.73 \pm 0.23	0.76 \pm 0.23	0.71 \pm 0.22	0.72 \pm 0.26	0.001	0.031	0.77
Mean gradient (mmHg)	41.4 \pm 16.8	41.7 \pm 15.7	41.7 \pm 17.2	40.6 \pm 17.3	0.99	0.40	0.38
Symptoms on admission							
NYHA I or II	575 (30.2%)	204 (39.2%)	271 (28.7%)	100 (22.9%)	<0.001	<0.001	0.026
NYHA III or IV	1326 (69.8%)	316 (60.8%)	674 (71.3%)	336 (77.1%)	<0.001	<0.001	0.026
No Angina	1477 (77.7%)	418 (80.4%)	736 (77.9%)	323 (73.9%)	0.29	0.020	0.12
CCS I or II	289 (15.2%)	73 (14.0%)	141 (14.9%)	75 (17.2%)	0.70	0.21	0.30
CCS III or IV	136 (7.2%)	29 (5.6%)	68 (7.2%)	39 (8.9%)	0.27	0.057	0.28
Risk Assessment							
STS PROM (%)	5.5 \pm 3.8	4.5 \pm 3.0	5.5 \pm 3.8	6.6 \pm 4.4	<0.001	<0.001	<0.001

Abbreviations: CCS = Canadian Cardiovascular Society; COPD = chronic obstructive pulmonary disease; LVEF = left ventricular ejection fraction; NYHA = New York Heart Association; STS PROM = Society of Thoracic Surgeons Predicted Risk Of Mortality.

Depicted are counts (%) and means \pm standard deviations, pairwise p-values from Fisher's tests (chi-square tests for tables larger than 2 \times 2) and *t* tests (for means).

Table 2
Procedural characteristics and in-hospital course

Variable	All patients (N = 1902)	Home (N = 520)	Rehabilitation (N = 945)	Other (N = 437)	pairwise pValue		
					Home vs Rehab	Home vs Other	Rehab vs Other
Procedure time (min)	58.2 ± 30.4	54.6 ± 28.7	56.7 ± 27.3	65.9 ± 36.7	0.16	<0.001	<0.001
Total contrast administered (cc)	177.8 ± 85.2	171.3 ± 81.3	172.2 ± 77.1	197.9 ± 101.6	0.84	<0.001	<0.001
General anesthesia	256 (13.5%)	65 (12.5%)	111 (11.7%)	80 (18.3%)	0.68	0.014	0.001
Device Features							
Medtronic CoreValve	415 (21.9%)	101 (19.4%)	196 (20.8%)	118 (27.1%)	0.59	0.005	0.011
Edwards Sapien XT	241 (12.7%)	58 (11.2%)	107 (11.3%)	76 (17.4%)	0.93	0.007	0.003
Symetis Acurate / - NEO	154 (8.1%)	45 (8.7%)	86 (9.1%)	23 (5.3%)	0.85	0.044	0.013
SJM Portico	24 (1.3%)	3 (0.6%)	15 (1.6%)	6 (1.4%)	0.14	0.31	1.00
Direct Flow Medical	1 (0.1%)	0 (0.0%)	0 (0.0%)	1 (0.2%)		0.46	0.32
Edwards Sapien 3	589 (31.0%)	181 (34.8%)	294 (31.2%)	114 (26.1%)	0.16	0.004	0.057
BSC Lotus	128 (6.7%)	39 (7.5%)	57 (6.0%)	32 (7.3%)	0.32	1.00	0.41
Medtronic Evolut R	225 (11.8%)	60 (11.5%)	115 (12.2%)	50 (11.5%)	0.74	1.00	0.72
Lotus Edge	5 (0.3%)	0 (0.0%)	4 (0.4%)	1 (0.2%)	0.30	0.46	1.00
Evolut PRO	108 (5.7%)	29 (5.6%)	65 (6.9%)	14 (3.2%)	0.37	0.086	0.006
Edwards Centera	9 (0.5%)	4 (0.8%)	4 (0.4%)	1 (0.2%)	0.47	0.38	1.00
Aortic regurgitation grade							
none	477 (25.2%)	138 (26.6%)	229 (24.4%)	110 (25.5%)	0.66	0.17	0.37
mild	1273 (67.4%)	350 (67.4%)	641 (68.3%)	282 (65.3%)			
moderate	137 (7.2%)	30 (5.8%)	67 (7.1%)	40 (9.3%)			
severe	3 (0.2%)	1 (0.2%)	2 (0.2%)	0 (0.0%)			
In Hospital Course							
Packed Red Blood Cells (PRBC)	226 (11.9%)	39 (7.5%)	109 (11.5%)	78 (17.8%)	0.014	<0.001	0.002
Total number of PRBC	2.0 (1.0; 3.0)	2.0 (1.0; 2.0)	2.0 (1.0; 3.0)	2.0 (2.0; 4.0)	0.25	0.008	0.037
Overall In-Hospital Stay (days)	8.3 ± 4.1	7.2 ± 3.1	8.9 ± 3.8	8.5 ± 5.5	<0.001	<0.001	0.17
Intensive care unit	0.2 ± 0.9	0.04 ± 0.3	0.1 ± 0.5	0.4 ± 1.6	0.017	<0.001	<0.001
Intermediate care	2.8 ± 2.1	2.3 ± 1.8	2.7 ± 1.9	3.7 ± 2.7	<0.001	<0.001	<0.001
General ward	5.4 ± 3.5	4.8 ± 2.5	6.1 ± 3.3	4.5 ± 4.4	<0.001	0.11	<0.001

Depicted are counts (%) and means ± standard deviations, pairwise p-values from Fisher's tests (chi-square tests for tables larger than 2 × 2) and *t* tests (for means).

younger (80.8 ± 6.5 vs 82.9 ± 5.4 vs 82.8 ± 6.4 years), less frequently female (37.3% vs 59.7% vs 54.2%), and had a lower estimated mortality risk according to the STS PROM (4.5 ± 3.0 vs 5.5 ± 3.8 vs 6.6 ± 4.4) compared with patients discharged to a rehabilitation facility or other institution. Baseline clinical characteristics were comparable except for rates of previous cardiac surgery (16.7% vs 11.2% vs 10.1%), preprocedure aortic valve area (0.76 ± 0.23 cm² vs 0.71 ± 0.22 cm² vs 0.72 ± 0.26 cm²) and baseline NYHA functional class III and IV (60.8% vs 71.3% vs 77.1%) for the respective discharge locations of home, rehabilitation facility and another institution.

Table 2 summarizes procedural characteristics across patient groups. Significant group differences were observed with respect to packed red blood cell transfusion (7.5% vs. 11.5% vs. 17.8%), and in-hospital length of stay (7.2 ± 3.1 vs 8.9 ± 3.8 vs 8.5 ± 5.5 days). There were no significant differences with respect to procedure time, total contrast administered and general anesthesia requirements among patients discharged home and those transferred to a rehabilitation facility. Conversely, patients transferred to another institution had a longer procedure duration, more contrast dye administered, and had higher rates of general anesthesia requirements during the procedure compared with patients with discharge home and to a rehabilitation

facility, respectively. (Table 2) Peri-procedural adverse events for all three patient groups are provided in Supplemental Table 1.

Clinical outcomes at one year after discharge are presented in Table 3. The primary end point occurred in 7.2%, 8.9%, and 22.4% across the 3 discharge categories of home, rehabilitation, and other institution, respectively. (Figure 3). Compared with patients discharged home, those sent to a rehabilitation facility showed no significant differences with respect to death (HR_{adj.} 0.82, 95% CI 0.54 to 1.24), cerebrovascular accidents (HR_{adj.} 0.79, 95% CI 0.47 to 1.34) or bleeding (HR_{adj.} 0.93, 95% CI 0.61 to 1.41) at 1-year follow-up. This observation was confirmed in 974 propensity score matched patients with discharge to home or to a rehabilitation facility (n = 487 per group, Supplemental Tables 2, 3 and 4). There were no significant differences in the risk of death (HR_{adj.} 1.01, 95% CI 0.62 to 1.63), cardiac death (HR_{adj.} 0.87, 95% CI 0.48 to 1.60), cerebrovascular events (HR_{adj.} 0.97, 95% CI 0.45 to 2.06), or any other end points at 1-year follow-up. (Supplemental Table 5). Conversely, patients with discharge home and to a rehabilitation facility were at lower risk for death (HR_{adj.} 0.37; 95% CI 0.24 to 0.56 and HR_{adj.} 0.44; 95% CI 0.32 to 0.60), cardiac death (HR_{adj.} 0.42; 95% CI 0.25 to 0.71 and HR_{adj.} 0.45; 95% CI 0.30 to 0.66), and bleeding (HR_{adj.} 0.48; 95% CI 0.30 to 0.76 and HR_{adj.} 0.66; 95% CI 0.45 to 0.96) during

Table 3
Outcomes at 1 Year post-discharge

Variable	Adjusted Hazard ratios [95% Confidence Intervals]					
	Home (N = 520)		Rehabilitation (N = 945)		Other (N = 437)	
	Home vs Rehab	Home vs Other	Home vs Rehab	Home vs Other	Home vs Other	Rehab vs Other
	Adj.HR [95% CI]	pValue	Adj.HR [95% CI]	pValue	Adj.HR [95% CI]	pValue
Mortality	0.82 (0.54-1.24)	0.35	0.37 (0.24-0.56)	<0.001	0.44 (0.32-0.60)	<0.001
Cardiac mortality	0.79 (0.47-1.34)	0.38	0.42 (0.25-0.71)	0.001	0.45 (0.30-0.66)	<0.001
Cerebrovascular accident	1.04 (0.52-2.08)	0.91	1.15 (0.47-2.80)	0.77	0.98 (0.46-2.10)	0.96
Disabling stroke	7 (1.9%)					
Non-disabling stroke	3 (0.6%)					
Myocardial infarction (MI)	6 (1.2%)					
Spontaneous MI	5 (1.1%)					
Bleeding	37 (7.7%)					
Life-threatening bleeding	11 (2.3%)					
Major bleeding	10 (2.1%)					
Permanent Pacemaker Implantation	9 (1.9%)					
	0.93 (0.61-1.41)	0.73	0.48 (0.30-0.76)	0.002	0.66 (0.45-0.96)	0.030
	0.95 (0.43-2.06)	0.89	0.48 (0.21-1.10)	0.084	0.57 (0.29-1.11)	0.099
	0.73 (0.34-1.58)	0.42	0.44 (0.19-1.04)	0.060	0.77 (0.40-1.48)	0.44
	0.76 (0.34-1.69)	0.50	0.53 (0.22-1.27)	0.16	0.68 (0.35-1.31)	0.25

Depicted are number of events occurring from discharge to one year after discharge (% from life-table estimate). Estimates from Cox's regressions.

Adjusted Cox's regression: adjusted for age, sex, Society of Thoracic Surgeons (STS) score, atrial fibrillation, left ventricular ejection fraction, year of transcatheter aortic valve implantation (≤ 2010 , 2011-2013, >2014); regurgitation aortic, mitral and tricuspid valves; and index hospitalization events: cerebrovascular event, vascular complication, life-threatening or major bleeding nonprocedural, acute kidney injury stage 2 or 3; number of days in the hospital before discharge (≤ 3 vs 4-6 vs 7-10 vs >10 days). Assuming no risk for missing variables and no adjusted analyses with less than ten events.

the first year after hospital discharge compared with patients with transfer to another institution.

Discussion

The present study investigates the impact of discharge location on clinical outcomes in patients who underwent transfemoral TAVI. The main findings are as follows:

- One out of 4 patients with severe aortic stenosis was discharged home after TAVI.
- Increasing rates of hospital discharge to a rehabilitation facility were observed, whereas rates of discharge to another institution declined over time.
- Discharge to home was associated with favorable clinical outcomes and no significant differences in all-cause mortality, stroke, or bleeding as compared to patients discharged to a rehabilitation facility.
- During 1 year after hospital discharge, patients with discharge to another institution had the highest incidence of death, cardiac death, and bleeding complications.

Optimization of transitional care is strongly associated with both an improvement in outcomes after major medical or surgical interventions as well as a substantial reduction in healthcare resource utilization.¹⁰ While patients with valvular heart disease underwent surgical valve replacement clearly benefit from specific cardiac rehabilitation programs,^{11,12} the impact of cardiac rehabilitation on clinical outcomes in patients who underwent TAVI is less well established.

After transfemoral TAVI, 1 out of 4 patients was discharged into self-care at home, whereas nearly twice that number were discharged into a rehabilitation facility, with a trend of increasing frequency over time (Figure 2). This unexpected finding contrasts with data from other geographical areas, where TAVI was independently associated with a lower probability for cardiac rehabilitation referral and participation.¹³ While this observation may partly be explained by the clinical characteristics of this patient population, it is also likely that the lack of robust evidence is driving the variability in cardiac rehabilitation referral.¹⁴ Indeed, the literature supporting the benefits of cardiac rehabilitation after TAVI is scarce and limited to small observational studies. Recent meta-analyses demonstrated only minor effects on exercise capacity among TAVI patients who underwent rehabilitation^{11,12} and the functional changes did not translate into improvements in clinical end points. The findings of our study are consistent with this observation, showing comparable clinical outcomes between patients discharged to a rehabilitation clinic, and those discharged into self-care at home.

Most recently, an analysis from the WIN-TAVI Registry provided insights regarding discharge disposition following TAVI in women. In this analysis where the majority of women were directly discharged home, and only 1 quarter were transferred to another institution, a pathway of home discharge was advocated.¹⁵ By contrast, an analysis from the U.S. National Inpatient Sample database with 40,900 patients undergoing TAVI between 2012 and 2014, showed that only a minority of women were discharged into self-

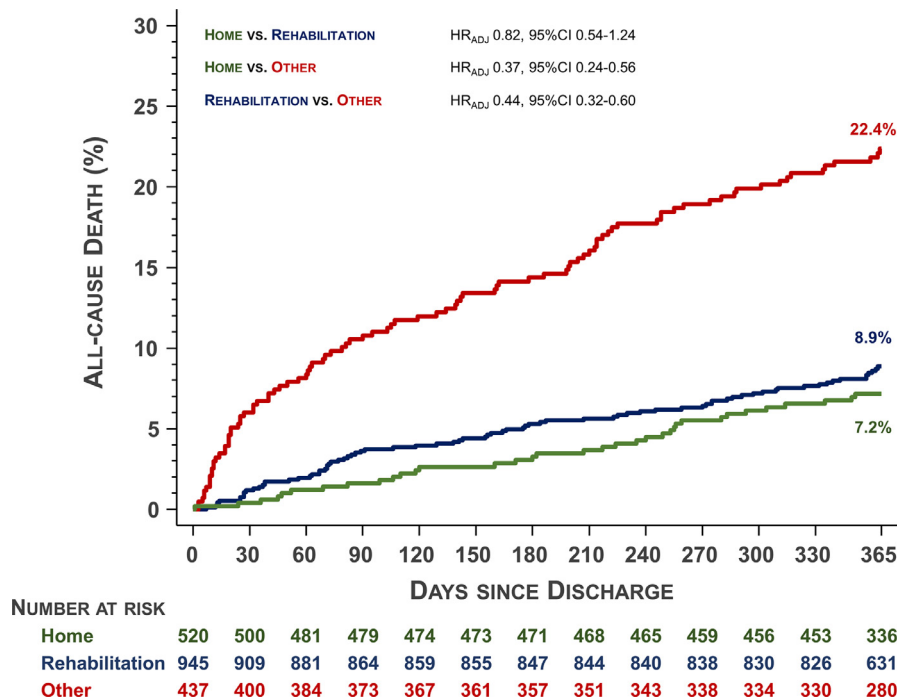


Figure 3. All-cause death according to discharge location.

care at home,¹⁶ which is more consistent with the findings of the present study. While the authors were unable to identify specific reasons for this observation with regards to clinical or procedural characteristics of female patients, they suspect that social and marital status might have confounded the data. Due to their longer life expectancy, elderly females tend to be widowed and live alone with increasing age,¹⁷ which might have altered the destination of discharge. WIN-TAVI study individuals transferred to another institution had an increased risk of cardiovascular death and stroke at 1-year follow-up.¹⁵ Rates of adverse clinical outcomes were even higher in our patient population, where patients transferred to another institution had the highest risk of death, cardiac death and bleeding complications during the first year after hospital discharge. Pre-existing co-morbidities as well as a higher estimated predicted risk of mortality are likely to be responsible for both prolonged medical care and worse clinical outcomes during longer-term follow-up. Whether or not early identification of these factors and a concept of pre-interventional rehabilitation (“prehabilitation”) results in a reduction of peri-procedural complications and hospital length of stay warrants further exploration.

The results of the present study need to be interpreted in light of the following limitations: Firstly, the results of this study mirror the experience of a single, tertiary care center, and the results might not be generalizable to other centers with differences in institutional protocols and discharge practices. Secondly, the data presented in this analysis need to be considered as observational only, and a selection bias in discharge disposition cannot be excluded. However, sophisticated statistical methods were used to adjust for potential confounders and we were able to reproduce results in propensity-score matched cohorts. Thirdly, the study

database did not collect social variables including marital status and family or social support, which may play a role in determining discharge mode and timing. As a fourth consideration, patients transferred to another institution were not further evaluated to clarify reasons for this discharge disposition. Indeed, there may have been important clinical considerations that ultimately impact subsequent clinical outcomes. As a fifth consideration, participation in rehabilitation was not prospectively defined and was the result of informed and patient-centered decision making. Finally, as the aim of this study was to evaluate the impact of discharge location on clinical outcomes and rather than investigate the effect of rehabilitation after TAVI, specific data regarding duration and mode of rehabilitation (i.e., in-patient versus ambulatory) were not collected. Future, prospective studies are likely to address the impact of home- and community-based rehabilitation strategies on morbidity and mortality after TAVI.

In conclusion, TAVI patients who were discharged home had long-term outcomes that were comparable to those discharged to a rehabilitation facility. Home discharge after TAVI may represent a safe and feasible strategy in well-selected patients.

Author Contributions

Romy Sweda: Conceptualization, Methodology, Validation, Writing - Original Draft.

Stephan Dobner: Conceptualization, Methodology, Validation, Writing - Original Draft.

Dik Heg: Validation, Formal analysis, Methodology, Writing - Review & Editing.

Jonas Lanz: Investigation, Writing - Review & Editing.

Daniel Malebranche: Investigation, Writing - Review & Editing.

Bettina Langhammer: Investigation, Writing - Review & Editing.

Taishi Okuno: Investigation, Writing - Review & Editing.

Fabien Praz: Investigation, Writing - Review & Editing.

Lorenz Räber: Investigation, Writing - Review & Editing.

Marco Valgimigli: Investigation, Writing - Review & Editing.

David Reineke: Investigation, Writing - Review & Editing.

Thomas Pilgrim: Investigation, Writing - Review & Editing.

Stephan Windecker: Investigation, Resources, Writing - Review & Editing, Supervision, Funding acquisition.

Stefan Stortecky: Conceptualization, Methodology, Validation, Investigation, Resources, Writing - Original Draft, Visualization, Supervision, Project administration, Funding acquisition.

Disclosures

S. Stortecky has received research grants to the institution from Edwards Lifesciences, Medtronic, Abbott Vascular and Boston Scientific, speaker fees from Boston Scientific and consultant fees from BTG and Teleflex. D. Heg is affiliated with CTU Bern, University of Bern, which has a staff policy of not accepting honoraria or consultancy fees. However, CTU Bern is involved in design, conduct, or analysis of clinical studies funded by not-for-profit and for-profit organizations. In particular, pharmaceutical and medical device companies provide direct funding to some of these studies. For an up-to-date list of CTU Bern's conflicts of interest see http://www.ctu.unibe.ch/research/declaration_of_interest/index_eng.html. T. Okuno reports personal fees from Abbott, outside the submitted work. L. Räber has received Research grants to the institution by Abbott Vascular, Biotronik, Boston Scientific, Heartflow, Sanofi, Regeneron and Consultation/Speaker Fees by Abbott, Amgen, AstraZeneca, Canon, CSL Behring, Sanofi, Vifor. T. Pilgrim has received research grants to the institution from Edwards Lifesciences, Biotronik and Boston Scientific and speaker fees from Boston Scientific and Biotronik. S. Windecker reports research and educational grants to the institution from Abbott, Amgen, BMS, Bayer, Boston Scientific, Biotronik, Cardinal Health, CardioValve, CSL Behring, Daiichi Sankyo, Edwards Lifesciences, Johnson&Johnson, Medtronic, Querbet, Polares, Sanofi, Terumo, Sinomed. Stephan Windecker serves as unpaid member of the steering / executive group of trials funded by Abbott, Abiomed, Amgen, BMS, Boston Scientific, Biotronik, Cardiovalve, Edwards Lifesciences, MedAlliance, Medtronic, Polares, Sinomed, V-Wave and Xeltis, but has not received personal payments by any pharmaceutical company or device manufacturer. He is also member of the steering / executive committee group of several investigated-initiated trials that receive funding by industry without impact on his personal remuneration. All other authors have no conflicts of interest to declare.

Supplementary materials

Supplementary material associated with this article can be found in the online version at <https://doi.org/10.1016/j.amjcard.2020.10.058>.

- Engelman DT, Ben Ali W, Williams JB, Perrault LP, Reddy VS, Arora RC, Roselli EE, Khojinezhad A, Gerdisch M, Levy JH, Lobdell K, Fletcher N, Kirsch M, Nelson G, Engelman RM, Gregory AJ, Boyle EM. Guidelines for perioperative care in cardiac surgery: enhanced recovery after surgery society recommendations. *JAMA Surg* 2019; 154:755–766.
- Rauch B, Davos CH, Doherty P, Saure D, Metzendorf MI, Salzwedel A, Völler H, Jensen K, Schmid JP. The prognostic effect of cardiac rehabilitation in the era of acute revascularisation and statin therapy: a systematic review and meta-analysis of randomized and non-randomized studies - the cardiac rehabilitation outcome study (CROS). *Eur J Prev Cardiol* 2016;23:1914–1939.
- Sibilitz KL, Berg SK, Tang LH, Risom SS, Gluud C, Lindschou J, Kober L, Hassager C, Taylor RS, Zwisler AD. Exercise-based cardiac rehabilitation for adults after heart valve surgery. *Cochrane Database Syst Rev* 2016;3:CD010876.
- Winkel MG, Stortecky S, Wenaweser P. Transcatheter aortic valve implantation current indications and future directions. *Front Cardiovasc Med* 2019;6:179.
- Lauck SB, Wood DA, Achtem L, Baumbusch J, Boone RH, Cheung A, Dvir D, Stub D, Tan JS, Ye J, Webb JG. Risk stratification and clinical pathways to optimize length of stay after transcatheter aortic valve replacement. *Can J Cardiol* 2014;30:1583–1587.
- Lauck SB, Wood DA, Baumbusch J, Kwon JY, Stub D, Achtem L, Blanke P, Boone RH, Cheung A, Dvir D, Gibson JA, Lee B, Leipsic J, Moss R, Perlman G, Polderman J, Ramanathan K, Ye J, Webb JG. Vancouver transcatheter aortic valve replacement clinical pathway. *Circ Cardiovasc Qual Outcomes* 2016;9:312–321.
- Wood DA, Lauck SB, Cairns JA, Humphries KH, Cook R, Welsh R, Leipsic J, Genereux P, Moss R, Jue J, Blanke P, Cheung A, Ye J, Dvir D, Umedaly H, Klein R, Rondi K, Poulter R, Stub D, Barbanti M, Fahmy P, Htun N, Murdoch D, Prakash R, Barker M, Nickel K, Thakkar J, Sathananthan J, Tyrell B, Al-Qoofi F, Velianou JL, Natarajan MK, Wijeyesundera HC, Radhakrishnan S, Horlick E, Osten M, Buller C, Peterson M, Asgar A, Palisaitis D, Masson JB, Kodali S, Nazif T, Thourani V, Babaliaros VC, Cohen DJ, Park JE, Leon MB, Webb JG. The Vancouver 3M (multidisciplinary, multimodality, but minimalist) clinical pathway facilitates safe next-day discharge home at low-, medium-, and high-volume transfemoral transcatheter aortic valve replacement centers: the 3M TAVR study. *J Am Coll Cardiol Interv* 2019;12:459–469.
- Wenaweser P, Pilgrim T, Kadner A, Huber C, Stortecky S, Buellesfeld L, Khattab AA, Meuli F, Roth N, Eberle B, Erdös G, Brinks H, Kalesan B, Meier B, Jni P, Carrel T, Windecker S. Clinical outcomes of patients with severe aortic stenosis at increased surgical risk according to treatment modality. *J Am Coll Cardiol* 2011;58:2151–2162.
- Kappetein AP, Head SJ, Généreux P, Piazza N, Van Mieghem NM, Blackstone EH, Broth TG, Cohen DJ, Cutlip DE, Van Es GA, Hahn RT, Kirtane AJ, Krucoff MW, Kodali S, MacK MJ, Mehran R, Rodés-Cabau J, Vranckx P, Webb JG, Windecker S, Serruys PW, Leon MB. Updated standardized endpoint definitions for transcatheter aortic valve implantation: the valve academic research consortium-2 consensus document. *J Thorac Cardiovasc Surg* 2013;145:6–23.
- Stoicescu N, You T, Eiterman A, Hartwell C, Davila V, Marjoribanks S, Florescu C, Bergese SD, Rogers B. Perspectives of post-acute transition of care for cardiac surgery patients. *Front Cardiovasc Med* 2017;4:1–8.
- Ribeiro GS, Melo RD, Deresz LF, Dal Lago P, Pontes MRN, Karsten M. Cardiac rehabilitation programme after transcatheter aortic valve implantation versus surgical aortic valve replacement: systematic review and meta-analysis. *Eur J Prev Cardiol* 2017;24:688–697.
- Anayo L, Rogers P, Long L, Dalby M, Taylor R. Exercise-based cardiac rehabilitation for patients following open surgical aortic valve replacement and transcatheter aortic valve implant: a systematic review and meta-analysis. *Open Heart* 2019;6:1–8.
- Hansen TB, Berg SK, Sibilitz KL, Sogaard R, Thygesen LC, Yazbeck AM, Zwisler AD. Availability of, referral to and participation in exercise-based cardiac rehabilitation after heart valve surgery: results from the national open heart survey. *Eur J Prev Cardiol* 2015;22:710–718.

14. Tarro Genta F. Cardiac rehabilitation for transcatheter aortic valve replacement. *Clin Geriatr Med* 2019;35:539–548.
15. Mehilli J, Chandrasekhar J, Sartori S, Chieffo A, Petronio AS, Lefèvre T, Presbitero P, Capranzano P, Tchetché D, Iadanza A, Sardella G, Mieghem NM Van, Meliga E, Dumonteil N, Fraccaro C, Trabattoni D, Jochheim D, Zadrozny M, Mikhail GW, Sharma S, Ferrer MC, Naber C, Kievit P, Moalem K, Baber U, Snyder C, Sharma M, Morice MC, Mehran R. Impact of discharge location after transcatheter aortic valve replacement on 1-year outcomes in women: results from the WIN-TAVI registry. *Can J Cardiol* 2019;35:199–207.
16. Shah RM, Hirji SA, Jolissaint JS, Lander HL, Shah PB, Pelletier MP, Sobieszczyk PS, Berry NC, Shook DC, Nyman CB, Bhatt DL, Body S, Kaneko T. Comparison of sex-based differences in home or non-home discharge utilization of rehabilitative services and outcomes following transcatheter aortic valve implantation in the United States. *Am J Cardiol* 2019;123:1983–1991.
17. ed.. In: Wallman KK, ed. *Older Americans 2016: Key Indicators of Wellbeing*. Washington, DC: U.S. Government Printing Office; 2016. Federal Interagency Forum on Aging-Related Statistics Available at: <http://www.agingstats.gov>.