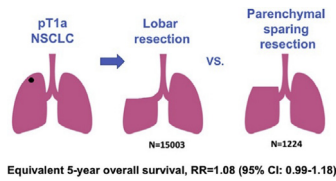


# Thoracic Articles in AATS Journals

Readers who found these articles interesting may also like to read these thoracic papers that can be found in recent issues of AATS journals.

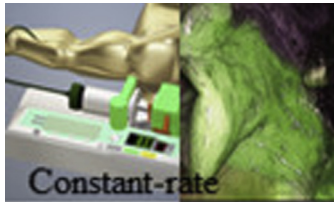
## THORACIC

### Lung Cancer



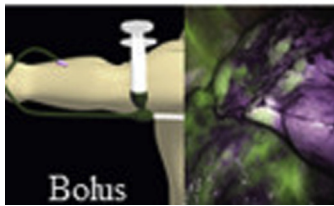
**STCVS:** Oncological outcomes of lobar resection, segmentectomy, and wedge resection for t1a non-small-cell lung carcinoma: A systematic review and meta-analysis. *Ijsseldijk MA, Shoni M, Siegert C, et al. Semin Thorac Cardiovasc Surg. 2020; in press.*

**Commentary:** Selecting appropriate patients for sublobar resection. *Sbrocchi AJ, Denlinger CE. Semin Thorac Cardiovasc Surg. 2020; in press.*



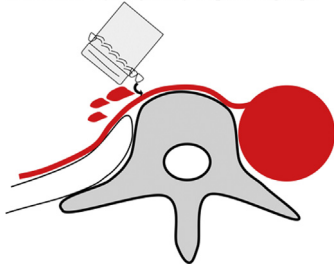
**JTCVS TECHNIQUES:** Constant-rate intravenous infusion of indocyanine green leading to high fluorescence intensity in infrared thoracoscopic segmentectomy. *Misaki N, Tatakawa K, Soo CS, Go T, Yokomise H. J Thorac Cardiovasc Surg Tech. 2020; in press.*

**Commentary:** Demarcating the intersegmental fissure... Please cut along the dotted line. *Sihag S. J Thorac Cardiovasc Surg Tech. 2020; in press.*



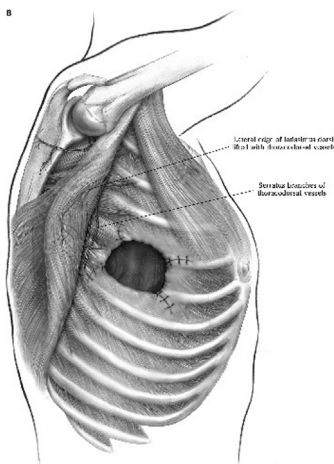
**Commentary:** Is it always greener on the other side? *Chan EG, Schuchert MJ. J Thorac Cardiovasc Surg Tech. 2020; in press.*

Intercostal artery is injured by the protruding staple



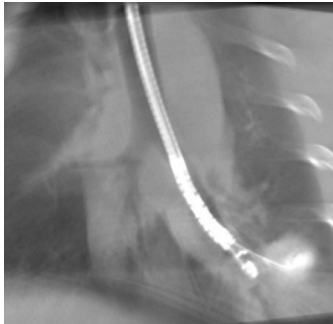
**JTCVS TECHNIQUES CASE REPORT:** A novel cause of late bleeding after lobectomy: Erosion of the bronchial staple-line in the chest wall. *Takamori S, Oizumi H, Suzuki J, Sadahiro.*

**Commentary:** Is there preventive measure for postoperative bleeding caused by the erosion of the bronchial staple-line in the chest wall? *Hu X, Chen C.*



**OpTechs:** A stepwise approach for postlobectomy bronchopleural fistula. *Gritsiuta AY, Eguchi T, Jones DR, Rocco G. Oper Tech Thorac Cardiovasc Surg. 2020;25(2):85-104.*

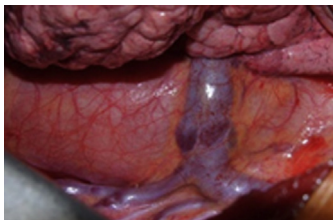
## Lung Cancer: Basic Science



**STCVS:** Endobronchial ultrasound-guided radiofrequency ablation of lung tumors and mediastinal lymph nodes: A preclinical study in animal lung tumor and mediastinal adenopathy models. *Motooka Y, Fujino K, Gregor A, et al.* *Semin Thorac Cardiovasc Surg.* 2020; in press.

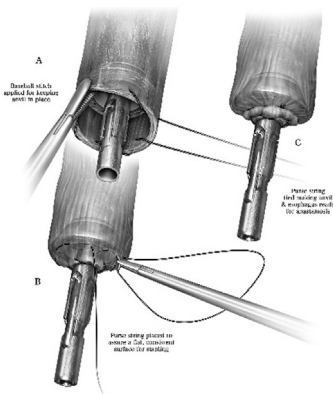
**Commentary:** Has the time finally arrived for radiofrequency ablation to enter the game? *Seder CW.* *Semin Thorac Cardiovasc Surg.* 2020; in press.

## Esophageal Cancer



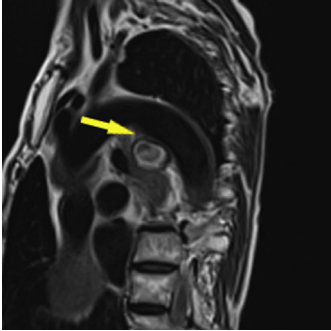
**STCVS CASE REPORT:** Not just your ordinary tumor: A solitary fibrous tumor of the esophagus. *Zamora AK, Chopra S, Sahakian A, Kim AW.* *Semin Thorac Cardiovasc Surg.* 2020;32:176-178.

**Commentary:** Solitary fibrous tumor of the esophagus—Rare but with typical characteristics. *Yeung J, de Perrot M.* *Semin Thorac Cardiovasc Surg.* 2020;32:179-180.



**OpTechs:** Esophagogastric anastomotic techniques for minimally invasive and robotic Ivor Lewis operations. *Caso R, Wee JO.* *Oper Tech Thorac Cardiovasc Surg.* 2020;25(2):105-123. doi:10.1053/j.optechstcvs.2020.04.002.

## Mediastinum



**JTCVS TECHNIQUES CASE REPORT:** Bronchial artery aneurysm mimicking aortic arch aneurysm or aortic dissection. *Ishida S, Koike W, Fujita T, Yagami K.* J Thorac Cardiovasc Surg Tech. 2020; in press.

**Commentary:** Magnetic resonance imaging for diagnosing vascular pathology. *Piechura LM, Sabe AA, Mallidi HR.* J Thorac Cardiovasc Surg Tech. 2020; in press.

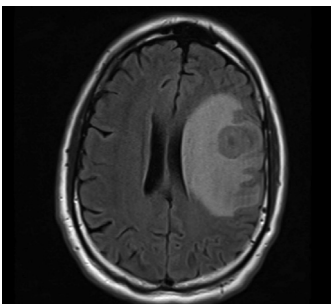
## Thymus



**STCVS:** Robotic-extended rethymectomy for refractory myasthenia gravis: A case series. *Li F, Li Z, Takahashi R, et al.* Semin Thorac Cardiovasc Surg. 2020; in press.

**Commentary:** Robotic-re-thymectomy: a surgical effective chance to treat refractory myasthenia gravis. *Filosso PL, Lyberis P, Guerrero F, Ruffini E.* Semin Thorac Cardiovasc Surg. 2020; in press.

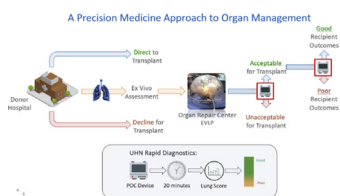
## Pleura



**JTCVS TECHNIQUES CASE REPORT:** Successful treatment of a patient with oligometastatic mesothelioma to the brain. J Thorac Cardiovasc Surg Tech. 2020; in press.

**Commentary:** When cancer is oligometastatic even mesothelioma is curable. J Thorac Cardiovasc Surg Tech. 2020; in press.

## Lung Transplant



**JTCVS OPEN INVITED EXPERT OPINION:** Human organ repair centers: Fact or fiction? *Keshavjee S.* J Thorac Cardiovasc Surg Open. 2020; in press.

**Commentary:** Quo vadis EVLP – regionalization or centralization? *Hoetzenecher K.* J Thorac Cardiovasc Surg Open. 2020; in press.

**Commentary:** Changing the equation by boosting the numerator. *Najmeh S, Hartwig MG.* J Thorac Cardiovasc Surg Open. 2020; In press.

## Perioperative Management

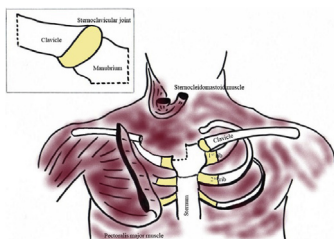
- Screening patients 24–48 hours prior to surgery using nasopharyngeal swab PCR testing and low-dose chest CT scan.
- Port-access surgical approach where possible.
- Device for intraoperative CO<sub>2</sub> insufflation with continuous smoke/aerosol removal and filtration.
- Desufflation of the thoracic cavity prior to all instrument changes and specimen removal.
- Minimization of instrument changes for lymph node removal using a simple bagging method.
- Use of a continuous suction system with filtration in thoracotomy cases.

**JTCVS TECHNIQUES SURGICAL TECHNIQUE:** COVIDSafe thoracic surgery: Minimizing intraoperative exposure to aerosols. *Seco M, Wood J, Wilson MK.* J Thorac Cardiovasc Surg Tech. 2020; in press.

**Commentary:** A breath of fresh air for thoracic surgeons in the covid era. *Wightman SC, David EA.* J Thorac Cardiovasc Surg Tech. 2020; in press.

**Commentary:** This port's for YOU! *Ceppa DP.* J Thorac Cardiovasc Surg Tech. 2020; in press.

## Thoracic: Other



**STCVS:** Sternoclavicular joint infections: Improved outcomes with myocutaneous flaps. *Ali B, Shetty A, Qeadan F, Demas C, Schwartz JD.* Semin Thorac Cardiovasc Surg. 2020;32(2): 369-376. doi:10.1053/j.semtcvs.2019.12.007.

**Commentary:** One and done. *Weber F.* Semin Thorac Cardiovasc Surg. 2020;32(2):377. doi:10.1053/j.semtcvs.2020.02.014.



**JTCVS TECHNIQUES CASE REPORT:** Snapping scapula due to traumatic costal fractures: A case report. *Nakamoto K, Sumiura S, Hashiyada H, Kiya S.* J Thorac Cardiovasc Surg Tech. 2020; in press.

**Commentary:** Scapulocostal syndrome after trauma: A snap caused by a break. *Weksler B.* J Thorac Cardiovasc Surg Tech. 2020; in press.

**Commentary:** The complete cardiothoracic surgeon: give me a rib - - - plate. *Lazzaro R, Patton B.* J Thorac Cardiovasc Surg Tech. 2020; in press.