

NAFLD and increased risk of cardiovascular disease: clinical associations, pathophysiological mechanisms and pharmacological implications

Giovanni Targher ¹, Christopher D Byrne ², Herbert Tilg ³

► Additional material is published online only. To view please visit the journal online (<http://dx.doi.org/10.1136/gutjnl-2020-320622>).

¹Endocrinology and Metabolism, University of Verona Department of Medicine, Verona, Veneto, Italy

²Southampton National Institute for Health Research Biomedical Research Centre, University Hospital Southampton, Southampton, UK

³Department of Internal Medicine I, Gastroenterology, Hepatology, Endocrinology & Metabolism, Medical University of Innsbruck, Innsbruck, Tirol, Austria

Correspondence to

Professor Giovanni Targher, Endocrinology and Metabolism, University of Verona Department of Medicine, Verona 37126, Italy; giovanni.targher@univr.it

GT, CDB and HT contributed equally.

Received 16 March 2020

Revised 27 March 2020

Accepted 31 March 2020

Published Online First

22 April 2020



© Author(s) (or their employer(s)) 2020. No commercial re-use. See rights and permissions. Published by BMJ.

To cite: Targher G, Byrne CD, Tilg H. *Gut* 2020;**69**:1691–1705.

ABSTRACT

Non-alcoholic fatty liver disease (NAFLD) is a public health problem, affecting up to a third of the world's adult population. Several cohort studies have consistently documented that NAFLD (especially in its more advanced forms) is associated with a higher risk of all-cause mortality and that the leading causes of death among patients with NAFLD are cardiovascular diseases (CVDs), followed by extrahepatic malignancies and liver-related complications. A growing body of evidence also indicates that NAFLD is strongly associated with an increased risk of major CVD events and other cardiac complications (ie, cardiomyopathy, cardiac valvular calcification and cardiac arrhythmias), independently of traditional cardiovascular risk factors. This narrative review provides an overview of the literature on: (1) the evidence for an association between NAFLD and increased risk of cardiovascular, cardiac and arrhythmic complications, (2) the putative pathophysiological mechanisms linking NAFLD to CVD and other cardiac complications and (3) the current pharmacological treatments for NAFLD that might also benefit or adversely affect risk of CVD.

INTRODUCTION

The 2017 Global Burden of Disease Study showed that there were 2.14 million liver-related deaths (2.06–2.30 million) that year, representing a 11.5% increase since 2012. Liver cancer and cirrhosis accounted for most of these deaths and, although chronic viral hepatitis remains the most common cause of liver-related death worldwide, these data show that non-alcoholic fatty liver disease (NAFLD) is the most rapidly growing contributor to liver-related mortality and morbidity.¹ In 2016, it was estimated that in the USA, over 64 million people had NAFLD, with annual direct medical costs of about US\$103 billion (US\$1613 per patient), and in four European countries (France, Germany, Italy and UK), it was estimated that there were ~52 million people with NAFLD with an annual cost of about €35 billion (from €354 to €1163 per patient). Costs of NAFLD were highest in patients aged 45–65 years and it was in this working age group where the economic costs of cardiovascular disease (CVD) were also much higher.²

CVDs, which include ischaemic heart disease and stroke, are the most common non-communicable diseases globally, responsible for an estimated 17.8 million deaths in 2017, of which more than three quarters were in low-income and middle-income countries.³ At the global scale, total deaths from

CVD increased by nearly 21% between 2007 and 2017, and were greater for men than for women at most ages in 2017, except for ages ≥85 years where there was the largest female-to-male ratio of CVD deaths.³

NAFLD occurs in at least 25%–30% of adults in high-income countries and in up to 70%–90% of individuals with obesity or type 2 diabetes mellitus (T2DM).⁴ NAFLD is also an important contributor to morbidity in other organs beyond the liver and, specifically, NAFLD is closely associated with an increased risk of developing extrahepatic complications, such as CVD, T2DM and chronic kidney disease, with fibrosis stage being the strongest disease-specific risk factor.^{5–8}

This review article focuses on the rapidly expanding body of clinical evidence that supports a strong association between NAFLD and the risk of CVD, discusses the pathophysiological mechanisms that link these two conditions and summarises the pharmacological treatments for NAFLD that might also benefit or adversely affect risk of CVD.

Risk of CVD and other cardiac complications

That NAFLD is associated with an increased risk of CVD is perhaps not surprising, given the close associations of NAFLD with cardiometabolic risk factors encapsulated by the metabolic syndrome, including abdominal obesity, atherogenic dyslipidaemia, hypertension and dysglycaemia.^{9–10} However, the nature and extent of the associations between NAFLD and CVD is not clear. Whether liver disease in NAFLD confers any additional CVD risk, or whether an increase in CVD risk in NAFLD is due to associated CVD risk factors, is uncertain. Elucidating whether liver disease in NAFLD contributes additional CVD risk is important, as it is plausible that treatment of liver disease may ameliorate risk of CVD, over and above treatment of NAFLD-associated risk factors.

Strong evidence links NAFLD with objectively assessed subclinical atherosclerosis (including also increased coronary artery calcium score) in adults and adolescents, as well as with an increased prevalence of clinically manifest CVD both in the general population and in different patient groups.^{11–13} Recently, in a large cohort of South Korean middle-aged individuals without pre-existing CVD, Lee *et al* also showed that imaging-defined NAFLD was independently associated with a higher risk of having non-calcified, 'vulnerable' coronary atherosclerotic plaques (as detected by coronary CT

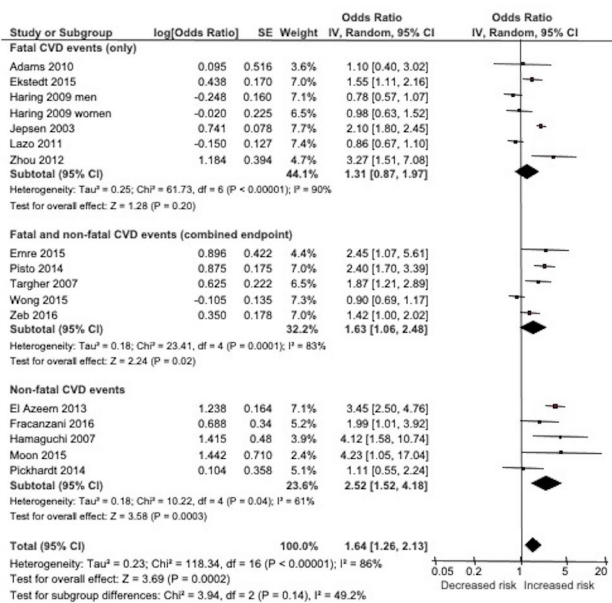


Figure 1 Random-effects meta-analysis on the risk of incident CVD events (fatal, non-fatal or both) associated with NAFLD. Forest plot of comparison of patients with NAFLD versus those without NAFLD. Data are derived from Targher *et al*⁷ (reproduced with permission). CVD, cardiovascular disease; NAFLD, non-alcoholic fatty liver disease.

angiography), thereby highlighting an increased NAFLD-related CVD risk among these asymptomatic individuals.¹⁴ Several cohort studies have consistently documented that NAFLD is associated with a higher risk of all-cause mortality and that patients with NAFLD are more likely to experience a CVD-related death than a liver-related death.^{2,6,9,10} Using mortality data from the National Vital Statistics System multiple-cause mortality data in the USA, Paik *et al* recently confirmed that CVD was one of the most important causes of death among people with NAFLD.¹⁵ Several cohort studies have also shown that NAFLD (defined radiologically or histologically) is predictive of incident CVD events. Many of these studies were also included in a comprehensive meta-analysis that incorporated a total of 16 observational studies with 34 043 individuals and captured nearly 2600 major CVD events over a median follow-up of 6.9 years.⁷ This meta-analysis concluded that NAFLD (diagnosed by liver biopsy or imaging methods) conferred an OR of 1.64 for fatal and/or non-fatal CVD events (random-effects OR 1.64, 95% CI 1.26 to 2.13) (figure 1).⁷ Furthermore, risk of incident CVD events appeared to increase further with greater severity of NAFLD (random-effects OR 2.58; 95% CI 1.78 to 3.75) (figure 2), and remained statistically significant in those studies where analysis was fully adjusted for established CVD risk factors.⁷

Although further studies in patients with biopsy-characterised NAFLD are needed to address this issue, some prospective studies with sufficiently long follow-ups have confirmed that the magnitude of risk of incident CVD paralleled the underlying severity of NAFLD and that fibrosis stage, rather than other histological features of NAFLD, were independently associated with adverse CVD and liver-related outcomes.^{16,17} Recently, in a multinational cohort study of 458 adults with biopsy-confirmed NAFLD with advanced fibrosis or compensated cirrhosis, Vilar-Gomez *et al* found that patients with advanced fibrosis had predominantly CVD events and extrahepatic malignancies, and those with NAFLD-cirrhosis had predominantly liver-related events, over a mean follow-up of 5.5 years.¹⁸ In a cohort of

285 US adults with biopsy-proven NAFLD without pre-existing CVD, Henson *et al* found that advanced fibrosis, but no other histological features of NAFLD, were associated with increased CVD incidence over a median of 5.2 years, even after adjusting for traditional risk factors and CVD risk scores.¹⁹ Conversely, in a large case-control study, Hagström *et al* found that 603 Swedish individuals with biopsy-proven NAFLD free of baseline CVD were at higher risk of incident CVD events compared with age-matched and sex-matched controls, although histological features of NAFLD did not significantly predict risk of CVD events over a mean follow-up of 18.6 years.²⁰

Other large studies recently showed that NAFLD was independently associated with an increased incidence of acute myocardial infarction, even in primary care populations.^{21,22} However, this latter finding has recently been questioned in a population-based case-control study that failed to find any significant association between a recorded diagnosis of NAFLD and risk of developing myocardial infarction and stroke, after adjustment for traditional CVD risk factors, using electronic records from four large European primary healthcare databases.²³ However, the lack of any independent association between NAFLD and risk of acute myocardial infarction and stroke reported in this study²³ may not be because such an association does not exist; but it is probably due to misclassification bias of NAFLD cases and other important methodological issues within the study design.²⁴

It is worth noting that some observational cohort studies, mostly performed in Asian populations, have also reported that there is a significant and independent association between NAFLD and long-term risk of progression of subclinical coronary or carotid atherosclerosis, and, most importantly, that regression of NAFLD on ultrasonography over time is associated with a lower risk of carotid atherosclerosis development.^{25,26}

Finally, convincing evidence indicates that NAFLD is strongly associated with valvular heart disease (mainly aortic valve sclerosis and mitral annulus calcification), increased risk of cardiomyopathy (mainly left ventricular dysfunction and hypertrophy, leading to the development of heart failure), arrhythmias

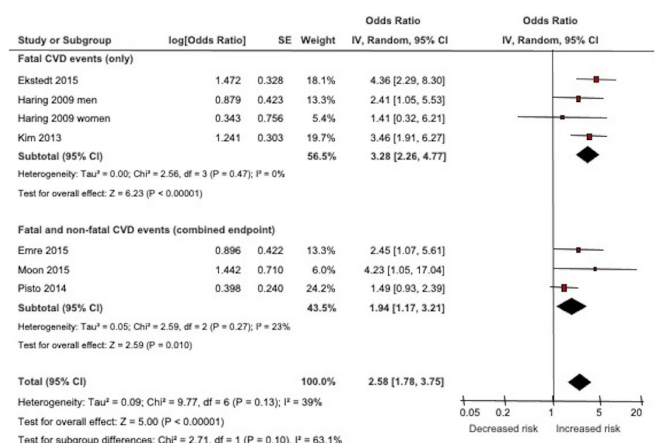


Figure 2 Random-effects meta-analysis on the risk of fatal and non-fatal CVD events associated with more 'severe' NAFLD (defined either by presence of hepatic steatosis on imaging plus either increased serum gamma-glutamyltransferase levels or high NAFLD fibrosis score or high ¹⁸F-fluoro-deoxyglucose uptake on positron emission tomography, or by increasing fibrosis stage on histology). Data are derived from Targher *et al*⁷ (reproduced with permission). CVD, cardiovascular disease; NAFLD, non-alcoholic fatty liver disease.

(mainly permanent atrial fibrillation and increased QTc interval prolongation) and some cardiac conduction defects (mainly persistent first-degree atrioventricular block and left anterior hemiblock).^{27,28}

Collectively, the available evidence not only demonstrates the strong association between NAFLD and CVD but also supports the view that NAFLD may increase risk of incident CVD events. These findings may have important implications for decision making in public health and clinical practice, and highlight the urgency of developing effective treatments for NAFLD. On this background of evidence, the European and American (published by the American Association for the Study of Liver Diseases (AASLD)) society guidelines for the management of NAFLD strongly recommended that all patients with NAFLD should undergo careful cardiovascular surveillance.^{29,30} To this end, a possible strategy at least in adults with NAFLD on primary CVD prevention might be to rely on the use of the Framingham risk score or other risk charts for CVD risk assessment.^{29–32} Although the Framingham risk score has been validated for use in NAFLD patients^{33,34}, it remains to be demonstrated whether addition of NAFLD improves the accuracy of risk score systems to predict CVD events. Moreover, large randomised controlled trials (RCTs) with CVD outcomes that focus on treatments for liver disease in NAFLD are also needed to better establish a causal relationship between treatment of NAFLD and effects of improvements in liver disease on incident CVD events. Despite tremendous research advancements in NAFLD, our understanding of sex differences in NAFLD remains insufficient.³⁵ It is known that CVD and NAFLD are both modulated by advancing age, sex, reproductive stage (ie, menopausal status) and synthetic hormone use.^{3,36–39} Recent evidence also suggests that women with NAFLD lose the CVD protection conferred by the female sex, and their global risk is underestimated by current CVD risk

score systems.⁴⁰ An adequate consideration of age, sex differences, sex hormones/menopausal status and other reproductive information in clinical investigation and gene association studies of NAFLD will be required to fill current gaps and implement precision medicine for NAFLD patients.³⁵ In the meantime, also in accord with the AASLD clinical guidelines, we strongly recommend that aggressive modification of coexisting cardiometabolic risk factors should be considered in all patients with NAFLD as these patients are at high risk for CVD mortality and morbidity.³⁰

Mechanisms linking NAFLD to CVD and other cardiac complications

The pathophysiology behind the association of NAFLD with CVD and other cardiac complications is incompletely understood and may involve other pathways besides insulin resistance, for example, low-grade inflammation, oxidative stress and the effects of perturbations in the gut microbiota. (figure 3)⁴¹ Low-grade systemic inflammation is a key feature of many metabolic diseases, such as T2DM, obesity and related disorders including NAFLD. NAFLD is not only linked to CVD and T2DM, but also to chronic kidney disease.¹⁰ Importantly, these associations are especially relevant in patients with NASH, suggesting that liver inflammation may directly contribute to the development of these extrahepatic diseases.

Multiple sources of cytokines drive liver inflammation and extrahepatic complications

Whereas it is recognised that liver fibrosis determines long-term liver prognosis in NAFLD, it is generally accepted that liver inflammation precedes fibrosis in most instances. However, hepatic fat accumulation may also lead to liver damage, that is, fibrosis, independent from inflammation.⁴² In addition, it

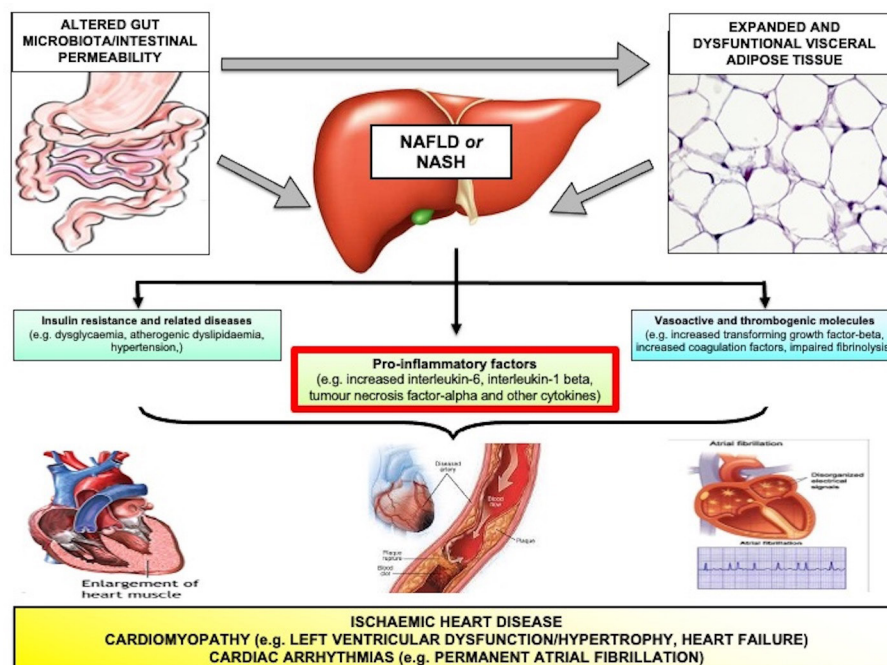


Figure 3 Putative mechanisms linking NAFLD to ischaemic heart disease and other cardiac complications. Low-grade systemic inflammation plays a crucial role in the pathophysiology of cardiomyopathy and arrhythmias associated with NAFLD, and may also contribute to the development of ischaemic heart disease. In NAFLD, low-grade systemic inflammation is generated by complex inter-relationships between diet/food, the gastrointestinal tract, host factors such as genetics, the visceral adipose tissue and the liver. the liver is a major cytokine producer in NAFLD. NAFLD, non-alcoholic fatty liver disease; NASH, non-alcoholic steatohepatitis.

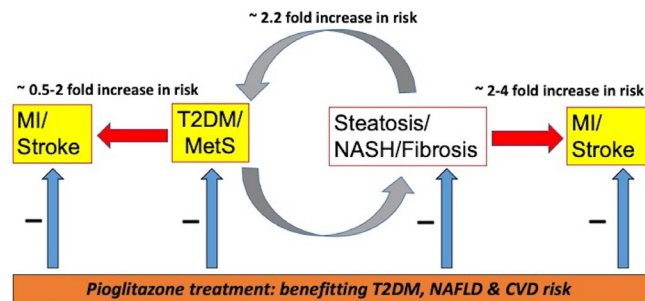


Figure 4 The figure schematically summarises the inter-relationships between each condition (ie, NAFLD, T2DM and CVD) from the results of prospective cohort studies and also illustrates where randomised controlled trials have shown pioglitazone treatment acts to decrease risk of clinical outcomes. CVD, cardiovascular disease; Mets, metabolic syndrome; MI, myocardial infarction; NAFLD, non-alcoholic fatty liver disease; NASH, non-alcoholic steatohepatitis; T2DM, type 2 diabetes mellitus.

is well recognised that advanced disease (ie, fibrosis stage 3–4) is characterised by hepatic fat loss and less inflammation but increased adiponectin levels potentially contributing to this phenotype.⁴³ Importantly, liver inflammation is accompanied by hepatic accumulation of inflammatory leukocytes and increased hepatic and extrahepatic cytokine production.^{44–45} It has also to be acknowledged that inflammation might be present in the liver intermittently and/or in a chronic-relapsing manner. This could also explain why liver fibrosis might play a role in CVD development.⁴⁶ Many preclinical and clinical studies have shown that blockade of proinflammatory cytokines, such as interleukin (IL)-11, not only attenuates steatosis but also liver inflammation and fibrosis development.⁴⁷ Although various sites of cytokine production are assumed, such as the liver, adipose tissue and gastrointestinal tract, it remains unclear how much each compartment contributes to overall inflammation observed in NAFLD. The ‘multiple-hits’ hypothesis proposed a decade ago highlighted these different compartments as sources of cytokine production.⁴⁴

Various lipid-related pathways may ‘drive’ hepatic inflammatory pathways in NAFLD.^{48–49} Whereas it had been initially believed that mainly intrahepatic triglyceride accumulation might contribute to liver inflammation, several studies have highlighted other pathways that may increase inflammation. These include enzymes involved in fatty acid synthesis, certain sphingolipids and polyunsaturated-derived eicosanoids, and specialised proresolving lipid mediators.⁵⁰ Saturated fat induces more pronounced increases in intrahepatic triglyceride content and insulin resistance compared with unsaturated fat and simple sugars.⁵¹ Plasma lipids might also be disease relevant as shown for certain ceramides which concentrations were independently associated with greater severity of coronary artery stenosis in the left anterior descending artery.⁵² Mitochondrial dysfunction and endoplasmic reticulum stress activation are also key factors contributing to NAFLD and insulin resistance.⁵³ Reducing endoplasmic reticulum stress by lipid chaperones reduces atherosclerosis, a key component in the clinical presentation of NAFLD.⁵⁴

A link between dyslipidaemia and hepatic inflammation has also been suggested by recent data showing that proprotein convertase subtilisin/kexin type-7 gene variations correlate with severity of liver disease in human NAFLD.⁵⁵ Furthermore, the presence of liver fat has also been linked to plasma inflammatory biomarkers in the Framingham Heart Study.⁵⁶ Extracellular

vesicles released by steatotic hepatocytes are also able to drive endothelial inflammation and atherogenesis.⁵⁷ These vesicles are characterised by altered miRNA expression profiles facilitating vascular inflammation by miR-1 release and nuclear factor (NF)- κ B activation.⁵⁷ Besides the importance of pathways in adipose tissue, plasma lipids appear to be of crucial relevance in the association between NAFLD and CVD risk.⁵⁸ Certain genetic variants associated with NAFLD, such as the patatin-like phospholipase domain-containing protein 3 (*PNPLA3*) and the transmembrane 6 superfamily 2 (*TM6SF2*) gene variants may protect against CVD risk and variants in glucokinase regulatory protein (*GCKR*) may be associated with increased CVD risk, perhaps mediated by a decrease in the atherogenic dyslipidaemic lipid profile in both *PNPLA3* and *TM6SF2* carriers and increase in the atherogenic dyslipidaemic profile in *GCKR* carriers.⁵⁸ However, further research is needed to better understand whether ‘genetic-related NAFLD’ and ‘metabolic-related NAFLD’ may exert differential effects on risk of incident CVD events.^{10–59}

Expanded visceral adipose tissue is a major site of low-grade systemic inflammation in NAFLD. Increased plasma IL-6 concentrations have also been associated with subclinical atherosclerosis in population-based studies⁶⁰, and earlier studies have shown that visceral adipose tissue contributes at least 35% of circulating levels of IL-6, a major proinflammatory cytokine in obesity-related disorders that is mainly responsible for increased plasma C reactive protein levels.⁶¹ Visceral adipose tissue also expresses much higher concentrations of IL-6, IL-1 β and tumour necrosis factor (TNF)- α compared with the liver and profound weight loss almost eliminates this expression, especially in adipose tissue.^{62–63} Expanded visceral adipose tissue might also affect NAFLD not only via the secretion of proinflammatory mediators as pharmacological inhibition of adipose triglyceride lipase by atlistatin inhibits high-fat diet induced insulin resistance and NAFLD⁶⁴, establishing also a non-inflammatory ‘adipose tissue-liver’ axis.

Proinflammatory pathways targeting vessels and the heart in NAFLD

Ectopic fat depots in the epicardium, pericardium and myocardium are associated with NAFLD and characterised by distinct metabolic signatures as demonstrated by magnetic resonance spectroscopy.⁶⁵ To date, it is not known whether proinflammatory pathways in ectopic fat directly affect cardiac function and atherosclerosis development. In systemic inflammatory diseases such as rheumatoid arthritis, there is an increased risk of sudden cardiac death and arrhythmias⁶⁶, and macrophage-derived IL-1 β induces arrhythmias in diabetic mice.⁶⁷ A meta-analysis has shown that increased proinflammatory biomarkers, such as plasma IL-6 and C reactive protein levels, are associated with an increased incidence of atrial fibrillation⁶⁸, and whether decreasing pro-inflammatory biomarkers with a targeted anti-inflammatory agent reduces risk of CVD events has been tested in the Canakinumab Antiinflammatory Thrombosis Outcome Study (CANTOS) trial.⁶⁹ In this proof-of-concept RCT, treatment with canakinumab (ie, an anti-IL-1 β monoclonal antibody) led to a lower rate of recurrent CVD events than placebo, independent of lipid-level lowering.⁶⁹ Also other proinflammatory cytokines, such as TNF- α and IL-17, have the capability, at least in preclinical studies, to induce cardiac arrhythmias.⁷⁰ Intense physical endurance induced atrial arrhythmia susceptibility in rats, via a TNF α -dependent mechanism.⁷¹ IL-17, another proinflammatory cytokine, contributes to ischaemia-induced

Table 1 Principal phase two placebo-controlled or head-to-head RCTs testing the efficacy and safety of antihyperglycaemic drugs in patients with NAFLD or NASH

	Liver enzymes	Liver fat*	Liver inflammation†	Liver fibrosis†	NASH resolution†	Major adverse effects
Metformin	Improved	Improved	No effect	No effect	No effect	Gastrointestinal
Glitazones (pioglitazone, rosiglitazone)	Improved	Improved	Improved	Improved	Improved	Weight gain (mild), oedema, heart failure, bone fractures
GLP-1 receptor agonists (liraglutide, exenatide)	Improved	Improved	Improved	No effect	Improved	Gastrointestinal
DPP-4 inhibitors (sitagliptin, vildagliptin)	Improved	No effect	Unknown	Unknown	Unknown	Pancreatic, joint pain
SGLT-2 inhibitors (dapagliflozin, empagliflozin, canagliflozin)	Improved	Improved	Unknown	Unknown	Unknown	Genitourinary infections, dehydration

NB: The aforementioned data are derived by an updated systematic review [104] that included phase 2 head-to-head or placebo-controlled RCTs of adults or children with NAFLD or NASH, which used an European Medicines Agency-approved antihyperglycaemic drug for treatment of NAFLD or NASH. Only RCTs that had at least 20 patients per treatment arms of interest were included in the systematic review.

Metformin, n=6 RCTs involving a total of 573 individuals, most of whom (>90%) did not have T2DM, who were treated for a median of 9 months. Four RCTs had liver biopsy data.

Glitazones, n=8 (6 pioglitazone and 2 rosiglitazone) RCTs involving a total of 828 individuals, most of whom (85%) did not have T2DM, who were treated for a median of 12 months. Seven RCTs had liver biopsy data.

GLP-1 RAs, n= 6 randomised controlled trials involving a total of 396 individuals, most of whom (73%) had T2DM, who were treated for a median of 6 months. Only one RCT had liver biopsy data (ie, the LEAN trial).

DPP-4 inhibitors, n=4 RCTs involving a total of 241 individuals with T2DM or pre-diabetes, who were treated for a median of 6 months. No RCTs with liver biopsy data.

SGLT-2 inhibitors, n=7 RCTs involving a total of 579 individuals (100% had T2DM), who were treated for a median of 6 months. No RCTs with liver biopsy data.

*RCTs where liver fat was determined either by imaging methods (ie, ultrasound and MRI or spectroscopy) or by histology.

†RCTs where liver inflammation, fibrosis and resolution of NASH was determined by liver biopsy.

DPP-4, dipeptidyl peptidase 4 inhibitors; GLP-1RAs, glucagon-like peptide-1 receptor agonists; NAFLD, non-alcoholic fatty liver disease; NASH, non-alcoholic steatohepatitis; RCT, randomised controlled trial; SGLT-2, sodium-glucose cotransporter 2 inhibitors; T2DM, type 2 diabetes mellitus.

arrhythmias in rabbits⁷², and IL-1 β , TNF α and IL-6 contribute to arrhythmias in rats.⁷³

NAFLD, microbiome and low-grade inflammation

There is an increasing evidence that the gut microbiota controls metabolic functions and is involved in NAFLD pathogenesis. Early animal experiments suggested that the gut microbiota is crucial for development of adipose tissue⁷⁴ and evolution of NAFLD.⁷⁵ A potential role for the intestinal microbiota in human NAFLD has been recently presented.⁷⁶ Advanced liver fibrosis was associated with an increased abundance of Proteobacteria and *Escherichia coli* and a decrease in Firmicutes. Interestingly, a gut microbiome-specific signature has been demonstrated in NAFLD-related cirrhosis.⁷⁷ Also in children an inflammation-related and fibrosis-related gut microbiome signature was observed with high presence of *Prevotella copri*.⁷⁸ At a species level, concentrations of *Ruminococcus*, *Blautia* and *Dorea* were increased in NASH patients.⁷⁹ A profound intestinal dysbiosis has also been observed in NAFLD that is independent of obesity and insulin resistance.⁸⁰ *Faecalibacterium prausnitzii*, a well-defined anti-inflammatory bacterial strain, was substantially decreased in NAFLD patients⁸¹ and substantial changes in the gut microbiome with a decrease in *Collinsella* and *Parabacteroides* have been observed in NAFLD-associated coronary heart disease.⁸²

The gut microbiota affects substantially circulating metabolites in NAFLD.⁸³ Phenylacetate is associated with hepatic steatosis and faecal transfer from obese women with high-grade steatosis into mice resulted in hepatic steatosis, as did feeding phenylacetate to mice.⁸³ Other gut-derived metabolites might be involved in NAFLD pathogenesis.⁸⁴ 3-(4-hydroxyphenyl)-lactate, mainly derived from *Proteobacteria*, was associated (in two independent patient cohorts) with hepatic steatosis and degree of fibrosis.⁸⁴ Bacterial components may also be present in the livers in NAFLD,

as a meta-taxonomic signature and also increased endotoxin has been detected in the livers.^{85 86} All these studies support a role for intestinal microbiota in NAFLD pathogenesis and hold the promise that manipulation at this level might improve liver disease phenotype. That said, to date, it remains uncertain what prebiotics, probiotics or synbiotics should be used to change the gut microbiota. Moreover, it is not known which gut microbiota need to be modified, both in type and in quantity, in order to benefit the liver and/or CVD risk in NAFLD. A recent phase 2 RCT tested whether 1-year administration of a synbiotic combination of probiotic and prebiotic agents affected hepatic fat content (assessed by magnetic resonance spectroscopy), non-invasive fibrosis biomarkers, and the composition of the faecal microbiome in 104 UK patients with NAFLD. The results of this RCT showed that the synbiotic altered the faecal microbiome, but did not reduce hepatic fat content or biomarkers of liver fibrosis. Faecal samples from patients, who received the synbiotic, had higher proportions of *Bifidobacterium* and *Faecalibacterium*, and reductions in *Oscillibacter* and *Alistipes*, compared with baseline (changes were not observed in the placebo group).⁸⁷

Trimethylamine N-oxide: prototypic microbiota-derived metabolite contributing to CVD

Gut microbes and related metabolites have been recently discovered as potentially important players in CVD. Commensals convert certain nutrients such as choline or carnitine into trimethylamine (TMA), which is metabolised in the liver by flavin mono-oxygenases to TMA N-oxide (TMAO). L-carnitine enriched diet in humans is converted into TMAO, an effect which was less pronounced in vegans/vegetarians.⁸⁸ This has also been observed after chronic red meat consumption and, interestingly, discontinuation of red meat consumption reduced TMAO levels within 4 weeks.⁸⁹

Table 2 Principal phase 2 or phase 3 head-to-head placebo-controlled RCTs (published in the last 10 years) testing the efficacy and safety of non-antihyperglycaemic drug treatments on NAFLD or NASH (assessed either by liver biopsy or by MRI) in overweight or obese adult individuals

First author, year*	RCT's characteristics	Intervention (group sizes), Duration	Main results	Main adverse effects	Cardiometabolic effects of the 'active' drug treatment
Younossi ZM <i>et al</i> , 2019 ⁵⁶	Multicentre, phase 3 RCT of overweight or obese adults with definite NASH and fibrosis stages F2-F3, or F1 with at least one accompanying comorbidity (REGENERATE trial)	A. Obeticholic acid 10 mg/day (n=312), an agonist of the farnesoid X nuclear receptor B. Obeticholic acid 25 mg/day (n=308) C. Placebo (n=311) Duration: 18 months (planned analysis <i>ad interim</i>)	Fibrosis improvement (≥ 1 stage) was achieved by 12% of patients in the placebo group, 18% in the obeticholic acid 10 mg group (p=0.045), and 23% in the obeticholic acid 25 mg group. The NASH resolution endpoint was not met (p=0.13)	Most common adverse event was mild-to-moderate pruritus (19% in the placebo group, 28% in the obeticholic acid 10 mg group, and 51% in the obeticholic acid 25 mg group)	Mild decrease in body weight. Marked increase in plasma LDL-cholesterol levels (nearly +40 mg/dL) after 1 month of treatment (more than half of patients treated with obeticholic acid started with established diabetes, obeticholic acid was also associated with an early transient increase in plasma glucose and haemoglobin A1c levels)
Harrison <i>et al</i> , 2019	Multicentre, phase 2 RCT of US overweight or obese adults with biopsy-confirmed NASH (fibrosis stages 1-3) and hepatic fat fraction of at least 10% at baseline when assessed by MRI-proton density fat fraction	A. Resmetrom (MGL-3196) 80 mg/day (n=84) B. Placebo (n=41) Duration: 36 weeks	Resmetrom-treated patients (n=78) showed a relative reduction of hepatic fat content compared with placebo (n=38) both at week 12 (-32.9% resmetrom vs -10.4% placebo; least squares mean difference -22.5%, 95% CI -32.9 to -12.2; p<0.001) and at week 36 (-37.3% resmetrom (n=74) vs -8.5 placebo (n=34); -28.8%, -42 to -15.7; p<0.001)	Adverse events were mild or moderate and were well balanced between the groups, except for a higher incidence of transient mild diarrhoea and nausea in the resmetrom group	Significant reductions in plasma LDL-cholesterol, triglycerides, apolipoprotein CII and lipoprotein (a) levels. No significant effects on body weight and other metabolic parameters
Sanyal <i>et al</i> , 2018	Multicentre, phase 2 RCT of US overweight or obese adults with biopsy-confirmed NASH (fibrosis stage 1-3), and a hepatic fat fraction of at least 10% when assessed by magnetic resonance imaging-proton density fat fraction	A. Pegbelfermin (BMS-986036) 10 mg once a day subcutaneous (n=25) B. Pegbelfermin 20 mg once a week subcutaneous (n=24) C. Placebo (n=26) Duration: 16 weeks	Significant decrease in absolute hepatic fat fraction in the group receiving 10 mg pegbelfermin daily (-6.8% vs -1.3%; p=0.0004) and in the group receiving 20 mg pegbelfermin weekly (-5.2% vs -1.3%; p=0.008) compared with the placebo group	Most adverse events were mild; the most common events were diarrhoea in 16% of patients treated with pegbelfermin and 8% of patients treated with placebo and nausea in 14% patients treated with pegbelfermin and 8% patients treated with placebo	No significant changes in body weight and plasma lipid profile (although plasma LDL-cholesterol levels tended to improve in those treated with pegbelfermin 10 mg/day) between treatment arms. Significant increase in plasma adiponectin levels in those treated with pegbelfermin
Loomba <i>et al</i> , 2018	Multicentre, phase 2 study of US overweight or obese adults with biopsy-confirmed NASH (fibrosis stage 1-3), and a hepatic fat fraction of at least 8% when assessed by magnetic resonance imaging-proton density fat fraction and liver stiffness of at least 2.5 kPa, based on MRI elastography measurement or historical biopsy result consistent with NASH and F1-F3 fibrosis	A. GS-0976 5 mg/day (an inhibitor of acetyl-coenzyme A carboxylase) (n=46) B. GS-0976 20 mg/day (n=46) C. Placebo (n=26) Duration: 12 weeks	A relative decrease of at least 30% from baseline in MRI-PDFF occurred in 48% of patients given GS-0976 20 mg (p=0.004 vs placebo), 23% given GS-0976 5 mg (p=0.043 vs placebo), and 15% given placebo. Changes in MRI elastography-measured stiffness did not significantly differ among the groups, but a dose-dependent decrease in the fibrosis marker tissue inhibitor of metalloproteinase-1 (TIMP-1) levels was observed in patients given GS-0976 20 mg	GS-0976 was safe; the most common adverse events were nausea and diarrhoea as well as increase in serum alkaline phosphatase levels	Significant increases in plasma triglyceride and glucose levels were observed (16% of GS-0976-treated patients showed hypertriglyceridemia >500 mg/dL and started treatment with fibrates over the trial)
Harrison <i>et al</i> , 2018	Multicentre, phase 2 RCT of overweight or obese adults with biopsy-confirmed NASH (stage 1-3 fibrosis), and at least 8% liver fat content when assessed by magnetic resonance imaging-proton density fat fraction	A. NMG282 3 mg once a day subcutaneous (n=27), an engineered FGF19 analogue, B. NMG282 6 mg once a day subcutaneous (n=28) C. Placebo (n=27) Duration: 12 weeks	At 12 weeks, 74% patients in the 3 mg dose group and 79% in the 6 mg dose group achieved at least a 5% reduction in absolute liver fat content measured by MRI-PDFF from baseline (relative risk 10% (95% CI 2.6 to 38.7) vs 11.4% (95% CI 3.0 to 43.8), respectively; p<0.001 for both comparisons) vs 7% in the placebo group	The most commonly reported adverse events were injection site reactions, diarrhoea, abdominal pain and nausea	Marked increases in plasma LDL-cholesterol levels in both the 3 mg NMG282 group and the 6 mg NMG282 group. No significant effects on body weight and other metabolic parameters (plasma glucose, insulin and haemoglobin A1c)

Continued

Table 2 Continued

First author, year*	RCT's characteristics	Intervention (group sizes), Duration	Main results	Main adverse effects	Cardiometabolic effects of the 'active' drug treatment
Loomba <i>et al</i> , 2018	Multinational, phase 2 RCT of overweight or obese adults with biopsy-confirmed NASH (fibrosis stage 2 or 3)	A. Selonsertib, a selective inhibitor of apoptosis signal-regulating kinase 1, 6 mg/day <i>plus</i> once-weekly injections of 125 mg of Simtuzumab (n=30) B. Selonsertib 18 mg/day <i>plus</i> once-weekly injections of 125 mg of Simtuzumab (n=32) C. Once-weekly injections of 125 mg of Simtuzumab, a monoclonal antibody against lysyl oxidase-like 2, (n=10) Duration: 24 weeks	After 24 weeks of treatment, the proportion of patients with a one or more stage reduction in liver fibrosis in the 18 mg selonsertib group was 13 of 30 (43%); in the 6 mg selonsertib group, 8 of 27 (30%); and in the simtuzumab-alone group, 2 of 10 (20%). Fibrosis improvement was associated with reductions in liver stiffness on MRI elastography, collagen content and lobular inflammation on liver biopsy	No significant differences in adverse events between the treatment groups; the most common adverse events were headache, nausea and sinusitis	Significant increases in plasma glucose levels (>250 mg/dL) were observed in nearly 10% of treated patients. Marked increases in plasma triglycerides (>500 mg/dL) were also observed in nearly 5% of treated patients. No significant effects on body weight or haemoglobin A1c levels
Friedman <i>et al</i> , 2018	Multinational, phase 2b RCT of overweight or obese adults with biopsy-confirmed NASH (stage 1–3 fibrosis) (CENTAUR trial)	A. Cenicriviroc, 150 mg/day (n=126), a dual antagonist of C-C chemokine receptor types 2 and 5 B. Placebo (n=126) Duration: 1 year	The improvement in fibrosis endpoint was met in significantly more subjects on cenicriviroc than placebo (20% vs 10%; p=0.02). In contrast, NASH improvement in the intent-to-treat population and resolution of NASH was achieved in a similar proportion of subjects on cenicriviroc and placebo (16% vs 19% and 8% vs 6%, respectively)	Safety and tolerability of cenicriviroc were comparable to placebo; the most common adverse events were headache, diarrhoea and fatigue	No significant effects on body weight and fasting metabolic parameters (plasma lipids, glucose and haemoglobin A1c levels) were observed between the two group treatments
Kim <i>et al</i> , 2017	Multicentre, phase 2 RCT of Korean overweight or obese adults with imaging-defined NAFLD (with at least 20% liver fat content when assessed by magnetic resonance spectroscopy) and elevated serum transaminase levels	A. Oltipraz 60 mg twice daily (n=21), a synthetic dithiolethione with an anti-steatotic effect by inhibiting the activity of liver X receptor alpha B. Oltipraz 120 mg twice daily (n=22), C. Placebo (n=21) Duration: 24 weeks	Compared with the placebo group (-3.2±11%), absolute reduction in liver fat content increased in a dose-dependent manner: -7.7±7% and -13.9±11% for the low-dose and high-dose groups (p=0.13 and p<0.01). Percent reduction in liver fat content was also greater in the high-dose group than in the placebo group (-34.6±29% vs -0.6±63%, p=0.046)	Adverse events were comparable among the groups; the most common adverse events were gastrointestinal symptoms	Body weight significantly decreased in the high-dose group compared with the placebo group. However, absolute changes in HOMA-insulin resistance and plasma lipids were not different among the groups
Ratzu <i>et al</i> , ¹⁹ 2016	Multinational, phase 2 RCT of overweight or obese adults with biopsy-confirmed NASH without cirrhosis	A. Elafibranor 80 mg/day (n=93), an agonist of PPAR-α and PPAR-δ B. Elafibranor 120 mg/day (n=91) C. Placebo (n=92) Duration: 52 weeks	In intention-to-treat analysis, there was no significant difference between the two elafibranor groups and placebo in the resolution of NASH without fibrosis worsening. However, NASH resolved without fibrosis worsening in a higher proportion of patients in the 120 mg elafibranor group vs the placebo group (19% vs 12%; p=0.045), based on a post-hoc analysis for the modified definition. Patients with NASH resolution after receiving elafibranor 120 mg had reduced liver fibrosis stages compared with those without NASH resolution	Elafibranor was safe and well tolerated, but did produce a mild, reversible increase in serum creatinine levels	Elafibranor did not cause weight gain. Plasma lipids (including LDL-cholesterol and triglycerides) and glucose levels were significantly reduced in the elafibranor 120 mg group vs the placebo group

Continued

Table 2 Continued

First author, year*	RCT's characteristics	Intervention (group sizes), Duration	Main results	Main adverse effects	Cardiometabolic effects of the 'active' drug treatment
Neuschwander-Tetri <i>et al.</i> , ¹⁵⁵ 2015	Multicentre, phase 2b RCT of US overweight or obese adults with biopsy-confirmed NASH without cirrhosis (FLINT trial)	A. Obeticholic acid 25 mg/day (n=110) B. Placebo (n=109) Duration: 72 weeks	45% of patients in the obeticholic acid group had improved liver histology (ie, decrease in NAS score by at least two points without worsening of fibrosis) compared with 21% of patients in the placebo group (p=0.0002). The NASH resolution endpoint was not met (p=0.08)	Adverse events were generally mild to moderate and were similar for the two groups, except for pruritus; 23% of patients in the obeticholic acid had pruritus compared with 6% in the placebo group	Mild decrease in body weight. Improvement in fasting insulin and HOMA-IR values, but no significant changes in plasma glucose and haemoglobin A1c levels. Marked increase in plasma LDL-cholesterol and decrease in HDL-cholesterol (already within 3 months of treatment with obeticholic acid). Significant increases in platelet count and serum creatinine levels were also observed
Zein <i>et al.</i> , ¹⁶⁰ 2011	Multicentre, phase 2 RCT of US overweight or obese adults with biopsy-confirmed NASH	A. Pentoxifylline 400 mg three times a day (n=26) B. Placebo (n=29) Duration: 12 months	After 1 year, intention-to-treat analysis showed a decrease of ≥ 2 points in the NAS in 38.5% of patients on pentoxifylline vs 13.8% of those on placebo (p=0.036). Pentoxifylline significantly improved steatosis (mean change in score -0.9 vs -0.04 with placebo) and lobular inflammation (median change -1 vs 0 with placebo). Although not statistically significant, improvement in fibrosis was observed in a greater proportion (35%) of patients on pentoxifylline compared with those on placebo (15%)	Nausea and vomiting were more frequent among those treated with pentoxifylline	Mild decrease in body weight. No significant changes in HOMA-insulin resistance, plasma glucose, lipids and cytokines (ie, plasma adiponectin and tumour necrosis factor- α levels)
Van Wagner <i>et al.</i> , ¹⁶¹ 2011	Single-centre, phase 2 RCT of US overweight or obese adults with biopsy-confirmed NASH	A. Pentoxifylline 400 mg three times a day (n=21) B. Placebo (n=9) Duration: 12 months	After 12 months, liver steatosis and cellular ballooning improved in the pentoxifylline group (p<0.05), whereas no histological feature of NASH improved with placebo	Adverse events were mild, most frequently headache and abdominal cramps, and did not differ between the groups	No significant changes in body weight, HOMA-insulin resistance, plasma glucose, lipids and cytokines
Sanyal <i>et al.</i> , ¹²⁶ 2010	Multicentre, phase 3 RCT of US overweight or obese adults with biopsy-confirmed NASH without diabetes (PIVENS trial)	A. Pioglitazone 30 mg/day (n=80) B. Vitamin E 800 IU/day (n=84) C. Placebo (n=83) Duration: 96 weeks	Vitamin E therapy, as compared with placebo, was associated with a significantly higher rate of improvement in NASH (43% vs 19%, p=0.001), but the difference in the rate of improvement with pioglitazone as compared with placebo was not significant (34% and 19%, respectively; p=0.04). Both agents were associated with significant reductions in hepatic steatosis and lobular inflammation but not with improvement in fibrosis scores compared with placebo	Adverse effects were similar among the three groups (except for weight gain in the pioglitazone group)	Subjects who received pioglitazone gained more weight than did those who received vitamin E or placebo. Pioglitazone also significantly increased plasma HDL-cholesterol levels, improved HOMA-insulin resistance, decreased plasma glucose levels and tended to decrease plasma triglycerides compared with placebo. No significant changes in body weight, plasma lipids and metabolic parameters were observed between the vitamin E and the placebo groups

NB: We did not include in the table phase 3 RCTs (ie, the Safety and Efficacy of Selonsertib in Adults with Nonalcoholic Steatohepatitis and Bridging F3 Fibrosis [STELLAR 3] and STELLAR 4 trials) with selonsertib in patients with advanced fibrosis or compensated cirrhosis that were early stopped for lack of any efficacy. We did not also include in the table phase 2 RCTs that used probiotic/synbiotic supplementations, vitamin D supplementations or high-dose n-3 polyunsaturated fatty acids.

* The complete list of references that are included in the table are reported in the online supplementary material.

HOMA, homeostasis model assessment; NAFLD, non-alcoholic fatty liver disease; NASH, non-alcoholic steatohepatitis; RCT, randomised controlled trial.

Many studies have shown that higher circulating TMAO levels are associated with adverse CVD outcomes.^{90–91} Furthermore, some meta-analyses have also confirmed a strong association between circulating TMAO levels and risk of fatal and non-fatal CVD events.^{92–93} Patients with ischaemic stroke also exhibit higher TMAO levels than healthy controls⁹⁴, and increased TMAO levels also predict CVD mortality in patients with existing peripheral arterial disease.⁹⁵ Interestingly, so far only a very few reports exist investigating circulating TMAO levels in NAFLD cohorts. In a study assessing 60 biopsy-proven NAFLD subjects, a greater severity of NAFLD was associated with higher TMAO levels but lower betaine and betaine/choline ratio.⁹⁶ Despite the shortage of reports on TMAO in NAFLD, it is increasingly accepted that circulating TMAO levels are a prominent biomarker of CVD, which is the most common cause of mortality in NAFLD patients. In addition, an association with thrombosis events was both shown clinically and experimentally as TMAO alters calcium signalling in platelets, and enhances responsiveness and *in vivo* thrombosis potential in various animal models.⁹⁷ Inhibitors of TMA-generating enzymes significantly reduced plasma TMAO levels for up to 3 days and rescued diet-induced enhanced platelet responsiveness and thrombus formation.⁹⁸ Another study observed a U-shaped association between TMAO levels and mortality risk in patients with acute venous thromboembolism, but it was not associated with recurrent venous thromboembolism.⁹⁹

The explanation as to how elevated TMAO levels might increase risk of CVD/cardiac complications is uncertain. A recent study found that TMAO affects the cardiac autonomic nervous system, promoting ischaemia-induced ventricular arrhythmias.¹⁰⁰ Another mode of action might involve the endoplasmic reticulum stress kinase PERK (ie protein kinase RNA-like endoplasmic reticulum kinase). PERK is a receptor for TMAO, and its binding results in PERK activation and induction of the transcription factor FoxO1, a key factor in metabolic disorders.¹⁰¹ Interestingly, TMAO may directly activate pro-inflammatory pathways as it upregulates NLRP3 and NF- κ B and thereby promotes vascular calcification.¹⁰² Thus, TMAO reflects a crucial microbiota-derived biomarker of atherosclerosis and potentially of NAFLD-associated CVD.

Pharmacological treatment

The cornerstone of NAFLD management remains lifestyle modification. Weight loss, increased physical activity and reductions in coexisting cardiometabolic risk factors may all have beneficial effects in NAFLD. Weight loss of approximately 5%–7% is able to decrease hepatic steatosis; however, an approximate 10% wt loss is required to reverse NASH and weight loss of $\geq 10\%$ may also improve or reverse hepatic fibrosis.^{29–30} Additionally, bariatric or weight loss surgery has been shown to ameliorate many CVD risk factors and may also be directly beneficial in patients with early liver disease. However, it is beyond the remit of this review to discuss the metabolic and vascular benefits of bariatric surgery in NAFLD and the reader is referred to recent clinical practice guidelines for the perioperative nutrition, metabolic and non-surgical support of patients undergoing bariatric procedures.¹⁰³

Presently, there are no approved pharmacological treatments for NAFLD or NASH. From a recent systematic review, it clearly emerges that the major issue in this field is the scarcity of high quality, adequately powered RCTs of sufficient duration that include clinically relevant hepatic endpoints (ie, liver histological data).¹⁰⁴ However, there are several novel therapeutic agents

under active investigation, and a variety of other drugs will also likely emerge over the next few years, allowing a more staged approach to the management of NAFLD that is likely to vary from patient to patient. That said, in selecting a specific drug for the treatment of NAFLD, we believe that pharmacological treatments should be chosen that target not only liver-related complications (cirrhosis and hepatocellular carcinoma (HCC)) but also the increased CVD risk in NAFLD.¹⁰⁵ Additionally, since NAFLD is a risk factor for incident T2DM¹⁰⁶ (which is also a risk factor for CVD), the ideal treatment for NAFLD would not only ameliorate liver disease, but also attenuate risk of developing T2DM¹⁰⁷, and thereby consequently lessen the risk of CVD.

It is beyond the scope of this review to discuss the evidence for all drugs that have been tested in the treatment of NAFLD. Therefore, we have focused on drug treatment options that might benefit not only the liver but also have beneficial (or adverse effects) on NAFLD-associated CVD risk. As discussed above, there is also a growing interest in the role of dysbiosis in both the pathogenesis of NAFLD and CVD. Whether faecal transplantation¹⁰⁸ to improve the gut microbiota profile and drugs relevant to the treatment of NASH, can favourably affect: gut microbiota; modify intestinal permeability and intestinal functions; and thereby treat NAFLD and CVD, remains uncertain. Presently, it is not known whether faecal transplantation benefits NAFLD. However, a recent pilot in which 20 men with metabolic syndrome were randomised to single lean vegan-donor or autologous faecal microbiota transplantation, caused detectable changes in intestinal microbiota composition, but failed to induce changes in TMAO production capacity or parameters related to vascular inflammation.¹⁰⁹

We have also briefly discussed below the evidence to date showing whether (or not) drugs relevant to the treatment of NAFLD and CVD can affect the gut microbiota, or gut microbiota-related mechanisms relevant to liver and vascular diseases.

Pioglitazone

The discovery of peroxisome proliferator-activated receptor gamma (PPAR- γ) in adipose tissue produced a step change in adipose tissue research.¹¹⁰ PPARs are a group of nuclear receptor proteins that function as transcription regulators and PPAR- γ heterodimerises with retinoid X receptor and binds to specific DNA sequences to regulate adipocyte differentiation and function, lipid metabolism and inflammation.¹¹¹ Glitazones (eg, rosiglitazone and pioglitazone) are selective activators of PPAR- γ and pioglitazone is a potent insulin sensitizer that is currently licensed for treatment of T2DM. Although there are well-recognised side effects of pioglitazone, such as a mild increase in body weight (especially subcutaneous fat depots), fluid retention (oedema and heart failure) and an increase in fragility fractures, there are also many benefits of pioglitazone besides its very durable effect to reduce plasma glucose concentrations in people with T2DM.

Since NAFLD independently increases risk of incident T2DM by ~ 2.2 -fold¹⁰⁶ and pioglitazone decreases risk of incident T2DM in individuals with pre-diabetes¹¹², it is reasonable to assume that pioglitazone may also decrease risk of incident T2DM in patients with NAFLD. Moreover, NAFLD increases risk of hypertension¹¹³, a recognised CVD risk factor, and pioglitazone lowers blood pressure.¹¹² NAFLD is an independent risk factor for CVD⁷ and both ischaemic heart disease and stroke are two of the leading causes of death worldwide. T2DM also increases risk of major CVD events \sim twofold^{114–116} and

pioglitazone has been shown in the PROactive trial (PROspective pioglitazone Clinical Trial In macroVascular Events) to decrease the composite of all-cause mortality, non-fatal myocardial infarction or stroke in T2DM patients with macrovascular disease.¹¹⁷ In this RCT, pioglitazone use was also associated with a 28% decrease in myocardial infarction¹¹⁸ and a 47% decrease in ischaemic stroke.¹¹⁹ In support of these findings, a meta-analysis of 19 RCTs enrolling ~16 500 patients showed a summary estimate of an 18% decrease in the composite of all-cause mortality, myocardial infarction or stroke (HR (HR) 0.82; 95% CI 0.72 to 0.94) with pioglitazone treatment.¹²⁰ Another meta-analysis investigating the effect of pioglitazone on risk of CVD events showed a benefit with pioglitazone in both patients with pre-diabetes (or insulin resistance) and those with T2DM.¹²¹ Recent evidence also showed that pioglitazone decreased risk of stroke or myocardial infarction in patients without T2DM but with insulin resistance after previous stroke or transient ischaemic attack.^{122 123} A large umbrella review recently confirmed that pioglitazone significantly decreased risk of major CVD events but increased risk of heart failure.¹²⁴

Pioglitazone treatment has been tested in several placebo-controlled RCTs in patients with biopsy-confirmed NASH and pioglitazone treatment resulted in improvement in histologic features of NAFLD and resolution of NASH in ~50% of patients; regardless of diabetes status.^{125–128} Interestingly, a recent meta-analysis of eight RCTs (including a total of 516 adults with biopsy-confirmed NASH) showed that pioglitazone improved advanced fibrosis in NASH, even in patients without diabetes.¹²⁹ Although the PPAR- γ 2 isoform is highly expressed in adipocytes, PPAR- γ 1 isoform is also expressed in both hepatic stellate cells and Kupffer cells. Pioglitazone effects on the liver are likely mediated by a combination of indirect effects on the adipose tissue to decrease free fatty acid flux to the liver and increase adiponectin levels (resulting in improved hepatic steatosis); and a direct effect of the drug on both Kupffer cells and stellate cells to decrease hepatic inflammation and fibrogenesis. Based on the available evidence, three sets of guidelines from the UK, Europe and USA have strongly recommended pioglitazone for treatment of NASH.^{29 30 130}

Although presently it is not possible to predict which patients with NASH are going to achieve NASH resolution with pioglitazone use, a recent post hoc analysis of the Pioglitazone vs Vitamin E vs Placebo for Treatment of Non-Diabetic Patients with Nonalcoholic Steatohepatitis (PIVENS) trial¹²⁶ suggested that after treatment with pioglitazone, patients with histological resolution of NASH had favourable changes in plasma lipoprotein subfractions compared with those without NASH resolution. In fact, individuals with NASH resolution had a significantly increased mean peak low-density lipoprotein (LDL) diameter and a higher frequency of LDL phenotype A (ie, large buoyant LDL particles) at week 96, even after adjustment for relevant confounding factors, including treatment group.¹³¹

To date, there is limited data regarding whether pioglitazone use may affect the gut microbiota. However, the PPAR- γ receptor is a butyrate sensor in the colonic lumen¹³², and microbiota-activated PPAR- γ signalling has been reported to prevent dysbiotic expansion of pathogenic bacteria by driving the energy metabolism of colonic epithelial cells.¹³³ In a mouse model of dietary fructose-driven gut dysbiosis that caused intestinal epithelial barrier impairment¹³⁴, the authors showed that pioglitazone repaired intestinal epithelial barrier damage by activating the NOD-like receptor family pyrin domain-containing 6 (NLRP6) inflammasome. Thus, it is possible that pioglitazone use could decrease the inflammatory stimulus from

lipopolysaccharide breaching the intestinal epithelial barrier, and gaining access to the portal circulation.

Such is the wealth of evidence supporting its effectiveness in decreasing risk of incident T2DM, treating hyperglycaemia in T2DM and decreasing risk of major CVD events, pioglitazone has been recently described as the ‘forgotten, cost-effective, cardio-protective’ drug for T2DM.¹³⁵ Given the evidence described above supporting its use in the treatment of liver disease in NASH, the overall evidence supports its use in NASH assuming there are no contradictions to treatment with pioglitazone. Few drugs are free of side effects and clinicians need to weigh up the balance of risk and benefits of prescribing this drug in their individual patients with NASH. Figure 4 schematically shows the inter-relationships between NAFLD, T2DM and CVD and where RCTs have shown pioglitazone treatment acts to significantly decrease risk of clinical outcomes in each condition. Were it not for the fact that pioglitazone treatment is associated with an increased risk of weight gain, and a small increase in bone fracture risk, pioglitazone treatment would be much more widely used in treating patients with NASH.

Statins

There is limited high-quality data with histological liver endpoints showing that statin use improves NASH.¹³⁶ There is also limited data regarding whether statin use affects the gut microbiota. That said, it has been suggested that the modulation of gut microbiota by statins has an important role in the therapeutic actions of these drugs¹³⁷, and these authors also suggested that faecal microbiota transplantation also improved plasma glucose concentrations. In this study using a mouse model of high-fat diet-induced obesity, the association between gut microbiota and immune responses was investigated. Both atorvastatin and rosuvastatin increased the abundance of the genera *Bacteroides*, *Butyricimonas* and *Mucispirillum*. The abundance of these genera was correlated with the inflammatory response, including levels of IL-1 β and transforming growth factor- β 1 in the ileum. In addition, oral faecal microbiota transplantation with faecal material collected from rosuvastatin-treated mouse groups improved hyperglycaemia. Additionally, a proof-of-concept study in individuals with dyslipidaemia showed that 4–8 weeks of rosuvastatin treatment significantly altered the gut microbiome and the abundance of specific bacterial taxa, which was correlated with the LDL-cholesterol-lowering response of the drug.¹³⁸ In this study, both *Firmicutes* and *Fusobacteria* were inversely associated with plasma LDL-cholesterol concentrations, while *Cyanobacteria* and *Lentisphaerae* were positively associated with LDL-cholesterol concentrations. However, it is important to note that this study lacked a control group, and the bacterial sequencing was performed only after rosuvastatin treatment. Consequently, the authors did not investigate the changes in the gut microbiome. Finally, it has also been suggested that gut microbiota may interact with statin treatments to both modify farnesoid X receptor signalling and decrease statin bioavailability, thereby potentially producing physiologically relevant effects on liver lipid and glucose metabolism.¹³⁹

A recent Expert Panel Statement concluded that the evidence from: animal studies, five post hoc analyses of prospective long-term survival studies, and five rather small biopsy-proven NASH studies that investigated the effect of statins on the liver in NAFLD, was not good enough to recommend statin treatment specifically for treating liver disease in NAFLD.¹⁴⁰ Notably, these studies provided data that suggested biochemical and histological improvement of NAFLD/NASH with statins and, in the

clinical studies, large reductions in CVD events in patients with NAFLD compared with those who did not have NAFLD.¹⁴⁰ Recently, there has also been interest in whether statins specifically decrease risk of liver fibrosis. In a cross-sectional study of 346 individuals with T2DM of which 45% were taking statins, multivariate analyses showed that statin use was inversely associated with significant liver fibrosis, despite statin-treated patients being older, more frequently male and with poorer glycaemic control than those without statins.¹⁴¹ However, it should be noted that to date, none of the available evidence is from RCTs that have tested the prior hypothesis that statins decrease liver fibrosis. Thus, the evidence is currently not good enough to recommend statin usage in order to specifically treat NAFLD or NASH. Nevertheless, pending forthcoming RCTs, clinicians should consider combining statins and pioglitazone in those patients with NAFLD or NASH, who are at high risk of CVD, for the primary and secondary prevention of CVD.¹⁴⁰

Currently, the American College of Cardiology/American Heart Association guidelines for primary CVD prevention recommend statin use as a first-line treatment in patients with increased plasma LDL-cholesterol concentrations (LDL-cholesterol ≥ 5 mmol/L); those with T2DM, who are 40–75 years of age; and those determined to be at ‘sufficient’ CVD risk.¹⁴² Presently, there is disagreement between different professional societies as to what constitutes ‘sufficient’ CVD risk (to prescribe statins), but in the above guidelines ‘sufficient’ CVD risk is defined as $\geq 7.5\%$ risk of developing a CVD event over 10 years. Although the CVD risk threshold that is required to advocate statin treatment has been lowered considerably over the last 20 years, most professional societies would endorse statin treatment when the patient’s 10 year CVD risk estimation was $\geq 10\%$.

For estimating CVD risk in NAFLD patients, there are no specific CVD risk prediction tools that take into account the presence or severity of NAFLD. To date, there is insufficient evidence to gauge whether knowing the patient has a diagnosis of NAFLD (with or without accompanying fibrosis) adds to existing risk factors in CVD risk estimation. Consequently, rather than recommending any specific CVD risk calculator, for example, the Framingham risk score or the SCORE (Systematic Coronary Risk Estimation) charts, it is better that a clinician uses a risk calculator than not. Given that the evidence discussed above suggests that NAFLD is a risk factor for CVD, it is highly likely that prediction of 10-year CVD risk in NAFLD is an underestimate of true CVD risk. Consequently, since statins are safe in patients with NAFLD¹⁴³, it would seem logical to err on the side of caution, and advocate use of statins to decrease CVD risk when the 10-year CVD risk is $\geq 7.5\%$. There is also some, more limited, evidence that statin treatment is associated with a reduced risk of HCC, most strongly in Asian but also in Western populations.¹⁴⁴ However, RCTs with statin treatment are required in populations at high risk of HCC, before advocating this treatment specifically to attenuate risk of HCC.

Metformin and other newer antihyperglycaemic agents

Metformin represents the first-line choice for treatment of T2DM worldwide. However, metformin is not currently recommended as a specific treatment for NAFLD or NASH, mostly due to its lack of efficacy on hepatic histological endpoints in both adults and adolescents with biopsy-confirmed NASH, irrespective of diabetes status.^{29 30 104} To date, there remains uncertainty about whether metformin reduces risk of major CVD events.^{124 145} Interestingly, however, several preclinical and observational studies and recent meta-analyses suggest that

metformin reduces risk of developing some types of cancer, especially HCC.^{146 147} It has also become well accepted that metformin has favourable effects on the intestinal microbiome. Metformin treatment increases microbial diversity and specifically increases mucin-degrading *Akkermansia muciniphila*, as well as several short-chain fatty acid-producing microbiota, increasing levels of butyrate and propionate that are involved in both glucose homeostasis and maintaining colonic epithelial integrity.^{148 149}

Similar to metformin, no robust RCT data exist with histological liver endpoints as a primary outcome to formally comment on the effectiveness of the use of the newer antihyperglycaemic agents, such as dipeptidyl peptidase-4 (DPP-4) inhibitors, glucagon-like peptide-1 receptor agonists (GLP-1 RAs) or sodium glucose cotransporter 2 (SGLT-2) inhibitors as a treatment for NAFLD or NASH^{29 30 104}, as shown in table 1. Among these newer anti-hyperglycaemic drugs, GLP-1 RAs seem to exert the most promising beneficial effects on NAFLD or NASH. A recent systematic review examining the efficacy of antihyperglycaemic drugs in patients with biopsy-proven or imaging-defined NAFLD with or without T2DM has supported the capability of GLP-1 RAs to reduce serum liver enzyme levels and improve NAFLD as detected by imaging techniques or liver histology.¹⁰⁴ In particular, a phase 2 RCT involving 55 UK obese patients with biopsy-proven NASH, it has been shown that patients who were randomly assigned to liraglutide 1.8 mg/day for 48 weeks had a greater histological resolution of NASH and significant improvements in individual histologic scores of NASH compared with those receiving placebo.¹⁵⁰ The authors suggested that the beneficial effects of liraglutide on the histological liver endpoints were due both to its direct hepatic effect and to concomitant weight loss as liraglutide is a potent treatment to effect weight loss.¹⁵⁰ Importantly, liraglutide and other long-acting GLP-1 RAs have also been shown to reduce risk of adverse CVD and renal outcomes in patients with T2DM.^{124 151} For such reasons, if larger phase 3 RCTs confirm the promising findings of this RCT, it would be reasonable to assume that GLP-1RAs will become a treatment option in NASH, especially in those patients who are obese or have T2DM. A recent comparison of the effects of treatment with metformin vs the GLP-1 agonist liraglutide on the gut microbiota in patients with T2DM showed that patients taking metformin had a significant increase in the relative abundance of the bacterial genus *Sutterella*, whereas those taking liraglutide had a significant increase in the genus *Akkermansia*. Thus, these preliminary data suggest that these two anti-hyperglycaemic drugs have differential effects on the microbiome, despite the fact that both drugs are similarly effective in lowering plasma glucose concentrations.¹⁵²

A systematic review also supported the possibility that SGLT-2 inhibitors may improve liver fat content (as assessed by imaging techniques) and serum liver enzymes.¹⁰⁴ However, most of the RCTs testing these novel drugs are small with a short period of follow-up, and importantly, to date, there are no placebo-controlled RCTs examining the long-term effects of SGLT-2 inhibitors on histologic features of NAFLD.¹⁰⁴ Additionally, there is also very limited data as to the effects of this class of drugs on the gut microbiome. SGLT-2 inhibitors have been shown to consistently reduce risk of major CVD events, heart failure and renal outcomes in patients with T2DM.^{124 153} Moreover, among patients with systolic heart failure, the risk of worsening heart failure or of CVD mortality was lower among those patients who received the SGLT-2 inhibitor dapagliflozin than among those who received placebo; regardless of the presence or absence of

T2DM.¹⁵⁴ Thus, this effect may represent an attractive bonus for the use of SGLT-2 inhibitors in NAFLD.

Obeticholic acid and other drugs

A number of phase 2 and phase 3 head-to-head or placebo-controlled RCTs have tested the efficacy and safety of novel drug treatments in NAFLD or NASH (table 2). Of these, obeticholic acid is one of the more promising new agents for NASH treatment. Obeticholic acid is a selective farnesoid X receptor agonist that regulates bile acid and lipid metabolism. Obeticholic acid at a dose of 25 mg/day has effected significant improvements in liver histology in the phase 2 FLINT (Farnesoid X Receptor Ligand Obeticholic Acid in NASH Treatment) trial¹⁵⁵, as well as well as positive ad interim results in the ongoing phase 3 REGENERATE trial.¹⁵⁶ Obeticholic acid was also associated with a mild decrease in body weight. However, in both trials, obeticholic acid caused marked increases in plasma LDL-cholesterol levels (nearly a 40 mg/dL increase) within 1 month of treatment (and more than half of patients treated with obeticholic acid started statin therapy in the REGENERATE trial).^{155 156} Recently, it has been suggested that obeticholic may also modify the gut microbiota and produce a favourable effect on the gut microbiome.¹⁵⁷ In this experimental study, treatment with antibiotic (that removed normal commensal bacteria) attenuated the effect of obeticholic acid in mice. Obeticholic acid treatment markedly increased abundance of *Blautia* and the concentration of taurine-bound bile acid induced by the high fat diet was reduced in liver.¹⁵⁷ In a phase 1 RCT in man, treatment with obeticholic acid for 17 days, that suppressed bile acid synthesis, produced a reversible induction of Gram-positive bacteria that are found in the small intestine. There was also an increase in the representation of microbial genomic pathways involved in DNA synthesis and amino acid metabolism with obeticholic acid treatment.¹⁵⁸

In a two phase RCT, a 1-year treatment with elafibranor 120 mg/day (ie, a dual agonist of peroxisome-proliferator activated receptor [PPAR]- α and PPAR- δ) was significantly associated with a higher rate of NASH resolution than occurred in the placebo arm. Elafibranor also improved plasma LDL-cholesterol, triglyceride and glucose levels.¹⁵⁹ It is uncertain whether elafibranor modifies the gut microbiome, and longer-term phase 3 RCTs are also required to confirm the positive effects of elafibranor on the liver in NASH.

CONCLUSIONS

This review supports the notion that CVD is the leading cause of death in NAFLD patients and that NAFLD is closely associated with an increased risk of CVD events and other cardiac complications (ie, cardiomyopathy, cardiac valvular calcification and arrhythmias) independent of traditional cardiovascular risk factors and metabolic syndrome features. Although further research is needed to draw a definitive conclusion, these observations raise the possibility that NAFLD, especially its more advanced forms, is directly involved in the pathogenesis of CVD. Recent evidence discussed here suggests that this process is mediated not only via the atherogenic dyslipidaemia occurring with features of the metabolic syndrome and NAFLD, but also through the systemic release of multiple proinflammatory and proatherogenic mediators from both the steatotic and inflamed/fibrotic liver and the intestine via changes in gut microbiota. The existing evidence to date reinforces the notion that NAFLD is a multisystem disease affecting many extrahepatic organ systems, including the cardiovascular system. Thus, we believe that a purely 'liver-centric' approach

to NAFLD is not sufficient and treatment of this burdensome liver disease needs to shift to a more patient-centred, multi-disciplinary team-based approach. Since more patients with NAFLD will die from CVD than from the consequences of their liver disease, we strongly believe that a careful assessment of the 10-year CVD risk is mandatory in all persons with NAFLD, together with early and aggressive treatment of all coexisting cardiometabolic risk factors.

Correction notice This article has been corrected since it published Online First. The ORCID ID's have been added and table 2 has been corrected.

Acknowledgements CDB is supported in part by grants from the Southampton National Institute for Health Research Biomedical Research Centre. GT is supported in part by grants from the University School of Medicine of Verona, Verona, Italy. HT is supported by the excellence initiative VAScAge (Centre for Promoting Vascular Health in the Ageing Community), an R&D K-Centre (COMET program - Competence Centers for Excellent Technologies) funded by the Austrian Ministry for Transport, Innovation and Technology, the Austrian Ministry for Digital and Economic Affairs and the federal states Tyrol, Salzburg and Vienna.

Contributors All authors contributed equally to write the manuscript.

Funding The authors have not declared a specific grant for this research from any funding agency in the public, commercial or not-for-profit sectors.

Competing interests None declared.

Patient and public involvement Patients and/or the public were not involved in the design, or conduct, or reporting, or dissemination plans of this research.

Patient consent for publication Not required.

Provenance and peer review Commissioned; externally peer reviewed.

ORCID iDs

Giovanni Targher <http://orcid.org/0000-0002-4325-3900>

Christopher D Byrne <http://orcid.org/0000-0001-6322-7753>

Herbert Tilg <http://orcid.org/0000-0002-4235-2579>

REFERENCES

- Paik JM, Golabi P, Younossi Y, et al. Changes in the global burden of chronic liver diseases from 2012 to 2017: the growing impact of nonalcoholic fatty liver disease. *Hepatology* 2020. doi:10.1002/hep.31173. [Epub ahead of print: 11 Feb 2020].
- Younossi ZM, Koenig AB, Abdelatif D, et al. Global epidemiology of nonalcoholic fatty liver disease-Meta-analytic assessment of prevalence, incidence, and outcomes. *Hepatology* 2016;64:73–84.
- GBD 2017 Causes of Death Collaborators. Global, regional, and national age-sex-specific mortality for 282 causes of death in 195 countries and territories, 1980–2017: a systematic analysis for the global burden of disease study 2017. *Lancet* 2018;392:1736–88.
- Byrne CD, Targher G. Nafld: a multisystem disease. *J Hepatol* 2015;62:S47–64.
- Byrne CD, Targher G. Nafld as a driver of chronic kidney disease. *J Hepatol* 2020.
- Mantovani A, Scorletti E, Mosca A, et al. Complications, morbidity and mortality of nonalcoholic fatty liver disease. *Metabolism* 2020;154170:154170.
- Targher G, Byrne CD, Lonardo A, et al. Non-Alcoholic fatty liver disease and risk of incident cardiovascular disease: a meta-analysis. *J Hepatol* 2016;65:589–600.
- Wild SH, Walker JJ, Morling JR, et al. Cardiovascular disease, cancer, and mortality among people with type 2 diabetes and alcoholic or nonalcoholic fatty liver disease hospital admission. *Diabetes Care* 2018;41:341–7.
- Targher G, Day CP, Bonora E. Risk of cardiovascular disease in patients with nonalcoholic fatty liver disease. *N Engl J Med* 2010;363:1341–50.
- Adams LA, Anstee QM, Tilg H, et al. Non-Alcoholic fatty liver disease and its relationship with cardiovascular disease and other extrahepatic diseases. *Gut* 2017;66:1138–53.
- Zhou Y-Y, Zhou X-D, Wu S-J, et al. Nonalcoholic fatty liver disease contributes to subclinical atherosclerosis: a systematic review and meta-analysis. *Hepatology Commun* 2018;2:376–92.
- Chang Y, Ryu S, Sung K-C, et al. Alcoholic and non-alcoholic fatty liver disease and associations with coronary artery calcification: evidence from the Kangbuk Samsung health study. *Gut* 2019;68:1667–75.
- Mantovani A, Ballestri S, Lonardo A, et al. Cardiovascular disease and myocardial abnormalities in nonalcoholic fatty liver disease. *Dig Dis Sci* 2016;61:1246–67.
- Lee SB, Park G-M, Lee J-Y, et al. Association between non-alcoholic fatty liver disease and subclinical coronary atherosclerosis: an observational cohort study. *J Hepatol* 2018;68:1018–24.
- Paik JM, Henry L, De Avila L, et al. Mortality related to nonalcoholic fatty liver disease is increasing in the United States. *Hepatology Commun* 2019;3:1459–71.

- 16 Hagström H, Nasr P, Ekstedt M, *et al.* Fibrosis stage but not NASH predicts mortality and time to development of severe liver disease in biopsy-proven NAFLD. *J Hepatol* 2017;67:1265–73.
- 17 Taylor RS, Taylor RJ, Bayliss S, *et al.* Association between fibrosis stage and outcomes of patients with nonalcoholic fatty liver disease: a systematic review and meta-analysis. *Gastroenterology* 2020.
- 18 Vilar-Gomez E, Calzadilla-Bertot L, Wai-Sun Wong V, *et al.* Fibrosis severity as a determinant of cause-specific mortality in patients with advanced nonalcoholic fatty liver disease: a Multi-National cohort study. *Gastroenterology* 2018;155:443–57.
- 19 Henson JB, Simon TG, Kaplan A, *et al.* Advanced fibrosis is associated with incident cardiovascular disease in patients with non-alcoholic fatty liver disease. *Aliment Pharmacol Ther* 2020.
- 20 Hagström H, Nasr P, Ekstedt M, *et al.* Cardiovascular risk factors in non-alcoholic fatty liver disease. *Liver Int* 2019;39:197–204.
- 21 Sinn DH, Kang D, Chang Y, *et al.* Non-alcoholic fatty liver disease and the incidence of myocardial infarction: a cohort study. *J Gastroenterol Hepatol* 2019;11.
- 22 Labenz C, Huber Y, Michel M, *et al.* Impact of NAFLD on the incidence of cardiovascular diseases in a primary care population in Germany. *Dig Dis Sci* 2019;69.
- 23 Alexander M, Loomis AK, van der Lei J, *et al.* Non-Alcoholic fatty liver disease and risk of incident acute myocardial infarction and stroke: findings from matched cohort study of 18 million European adults. *BMJ* 2019;8:15367.
- 24 Henson JB, Roden M, Targher G, *et al.* Is NAFLD not a risk factor for cardiovascular disease: not yet time for a change of heart. *Hepatology* 2020.
- 25 Sinn DH, Kang D, Chang Y, *et al.* Non-Alcoholic fatty liver disease and progression of coronary artery calcium score: a retrospective cohort study. *Gut* 2017;66:323–9.
- 26 Sinn DH, Cho SJ, Gu S, *et al.* Persistent nonalcoholic fatty liver disease increases risk for carotid atherosclerosis. *Gastroenterology* 2016;151:481–8.
- 27 Anstee QM, Mantovani A, Tilg H, *et al.* Risk of cardiomyopathy and cardiac arrhythmias in patients with nonalcoholic fatty liver disease. *Nat Rev Gastroenterol Hepatol* 2018;15:425–39.
- 28 Mantovani A, Dauriz M, Sandri D, *et al.* Association between non-alcoholic fatty liver disease and risk of atrial fibrillation in adult individuals: an updated meta-analysis. *Liver Int* 2019;39:758–69.
- 29 European Association for the Study of the L, European Association for the Study of D, European Association for the Study of O. EASL–EASD–EASO clinical practice guidelines for the management of non-alcoholic fatty liver disease. *J Hepatol* 2016;64:1388–402.
- 30 Chalasani N, Younossi Z, Lavine JE, *et al.* The diagnosis and management of nonalcoholic fatty liver disease: practice guidance from the American association for the study of liver diseases. *Hepatology* 2018;67:328–57.
- 31 Choudhary NS, Duseja A. Screening of cardiovascular disease in nonalcoholic fatty liver disease: whom and how? *J Clin Exp Hepatol* 2019;9:506–14.
- 32 Lonardo A, Sookoian S, Pirola CJ, *et al.* Non-Alcoholic fatty liver disease and risk of cardiovascular disease. *Metabolism* 2016;65:1136–50.
- 33 Labenz C, Prochaska JH, Huber Y, *et al.* Cardiovascular risk categories in patients with nonalcoholic fatty liver disease and the role of Low-Density lipoprotein cholesterol. *Hepatal Commun* 2019;3:1472–81.
- 34 Treeprasertsuk S, Leverage S, Adams LA, *et al.* The Framingham risk score and heart disease in nonalcoholic fatty liver disease. *Liver Int* 2012;32:945–50.
- 35 Lonardo A, Nascimbeni F, Ballestri S, *et al.* Sex differences in nonalcoholic fatty liver disease: state of the art and identification of research gaps. *Hepatology* 2019;70:1457–69.
- 36 Menotti A, Puddu PE. Can we still learn from the seven countries study? *Curr Opin Lipidol* 2018;29:313–7.
- 37 Dunn W, Xu R, Wingard DL, *et al.* Suspected nonalcoholic fatty liver disease and mortality risk in a population-based cohort study. *Am J Gastroenterol* 2008;103:2263–71.
- 38 Spence JD, Pilote L. Importance of sex and gender in atherosclerosis and cardiovascular disease. *Atherosclerosis* 2015;241:208–10.
- 39 Yang JD, Abdelmalek MF, Guy CD, *et al.* Patient Sex, Reproductive Status, and Synthetic Hormone Use Associate With Histologic Severity of Nonalcoholic Steatohepatitis. *Clin Gastroenterol Hepatol* 2017;15:127–31.
- 40 Allen AM, Therneau TM, Mara KC, *et al.* Women with nonalcoholic fatty liver disease lose protection against cardiovascular disease. *Am J Gastroenterol* 2019;114:1764–71.
- 41 Stahl EP, Dhindsa DS, Lee SK, *et al.* Nonalcoholic fatty liver disease and the heart: JACC state-of-the-art review. *J Am Coll Cardiol* 2019;73:948–63.
- 42 Dongiovanni P, Stender S, Pietrelli A, *et al.* Causal relationship of hepatic fat with liver damage and insulin resistance in nonalcoholic fatty liver. *J Intern Med* 2018;283:356–70.
- 43 van der Poorten D, Samer CF, Ramezani-Moghadam M, *et al.* Hepatic fat loss in advanced nonalcoholic steatohepatitis: are alterations in serum adiponectin the cause? *Hepatology* 2013;57:2180–8.
- 44 Tilg H, Moschen AR. Evolution of inflammation in nonalcoholic fatty liver disease: the multiple parallel hits hypothesis. *Hepatology* 2010;52:1836–46.
- 45 Krenkel O, Tacke F. Liver macrophages in tissue homeostasis and disease. *Nat Rev Immunol* 2017;17:306–21.
- 46 Lonardo A, Nascimbeni F, Mantovani A, *et al.* Hypertension, diabetes, atherosclerosis and NASH: cause or consequence? *J Hepatol* 2018;68:335–52.
- 47 Widjaja AA, Singh BK, Adami E, *et al.* Inhibiting interleukin 11 signaling reduces hepatocyte death and liver fibrosis, inflammation, and steatosis in mouse models of nonalcoholic steatohepatitis. *Gastroenterology* 2019;157:777–92.
- 48 Svegliati-Baroni G, Pierantonelli I, Torquato P, *et al.* Lipidomic biomarkers and mechanisms of lipotoxicity in non-alcoholic fatty liver disease. *Free Radical Biology and Medicine* 2019;144:293–309.
- 49 Schuster S, Cabrera D, Arrese M, *et al.* Triggering and resolution of inflammation in NASH. *Nat Rev Gastroenterol Hepatol* 2018;15:349–64.
- 50 Musso G, Cassader M, Paschetta E, *et al.* Bioactive lipid species and metabolic pathways in progression and resolution of nonalcoholic steatohepatitis. *Gastroenterology* 2018;155:282–302.
- 51 Luukkonen PK, Sädevirta S, Zhou Y, *et al.* Saturated fat is more metabolically harmful for the human liver than unsaturated fat or simple sugars. *Diabetes Care* 2018;41:1732–9.
- 52 Mantovani A, Bonapace S, Lunardi G, *et al.* Associations between specific plasma ceramides and severity of coronary-artery stenosis assessed by coronary angiography. *Diabetes Metab* 2019.
- 53 Ozcan U *et al.* Endoplasmic reticulum stress links obesity, insulin action, and type 2 diabetes. *Science* 2004;306:457–61.
- 54 Erbay E, Babaev VR, Mayers JR, *et al.* Reducing endoplasmic reticulum stress through a macrophage lipid chaperone alleviates atherosclerosis. *Nat Med* 2009;15:1383–91.
- 55 Dongiovanni P, Meroni M, Baselli G, *et al.* PCSK7 gene variation bridges atherogenic dyslipidemia with hepatic inflammation in NAFLD patients. *J Lipid Res* 2019;60:1144–53.
- 56 Fricker ZP, Pedley A, Massaro JM, *et al.* Liver fat is associated with markers of inflammation and oxidative stress in analysis of data from the Framingham heart study. *Clinical Gastroenterology and Hepatology* 2019;17:1157–64.
- 57 Jiang F, Chen Q, Wang W, *et al.* Hepatocyte-Derived extracellular vesicles promote endothelial inflammation and atherogenesis via microRNA-1. *J Hepatol* 2020;72:156–66.
- 58 Brouwers MCGJ, Simons N, Stehouwer CDA, *et al.* Non-Alcoholic fatty liver disease and cardiovascular disease: assessing the evidence for causality. *Diabetologia* 2020;63:253–60.
- 59 Lonardo A, Ballestri S, Targher G. "Not all forms of NAFLD were created equal". Do metabolic syndrome-related NAFLD and PNPLA3-related NAFLD exert a variable impact on the risk of early carotid atherosclerosis? *Atherosclerosis* 2017;257:253–5.
- 60 Simon TG, Trejo MEP, McClelland R, *et al.* Circulating interleukin-6 is a biomarker for coronary atherosclerosis in nonalcoholic fatty liver disease: results from the multi-ethnic study of atherosclerosis. *Int J Cardiol* 2018;259:198–204.
- 61 Mohamed-Ali V, Goodrick S, Rawesh A, *et al.* Subcutaneous adipose tissue releases interleukin-6, but not tumor necrosis factor-alpha, in vivo. *J Clin Endocrinol Metab* 1997;82:4196–200.
- 62 Moschen AR, Molnar C, Geiger S, *et al.* Anti-inflammatory effects of excessive weight loss: potent suppression of adipose interleukin 6 and tumour necrosis factor expression. *Gut* 2010;59:1259–64.
- 63 Moschen AR, Molnar C, Enrich B, *et al.* Adipose and liver expression of interleukin (IL)-1 family members in morbid obesity and effects of weight loss. *Mol Med* 2011;17:840–5.
- 64 Schweiger M, Romauch M, Schreiber R, *et al.* Pharmacological inhibition of adipose triglyceride lipase corrects high-fat diet-induced insulin resistance and hepatosteatosis in mice. *Nat Commun* 2017;8:14859.
- 65 Lovric A, Granér M, Björnson E, *et al.* Characterization of different fat depots in NAFLD using inflammation-associated proteome, lipidome and metabolome. *Sci Rep* 2018;8:14200.
- 66 Lazzerini PE, Capecci PL, Laghi-Pasini F. Systemic inflammation and arrhythmic risk: lessons from rheumatoid arthritis. *Eur Heart J* 2017;38:1717–27.
- 67 Monnerat G, Alarcón ML, Vasconcellos LR, *et al.* Macrophage-Dependent IL-1 β production induces cardiac arrhythmias in diabetic mice. *Nat Commun* 2016;7:13344.
- 68 Wu N, Xu B, Xiang Y, *et al.* Association of inflammatory factors with occurrence and recurrence of atrial fibrillation: a meta-analysis. *Int J Cardiol* 2013;169:62–72.
- 69 Ridker PM, Everett BM, Thuren T, *et al.* Antiinflammatory therapy with canakinumab for atherosclerotic disease. *N Engl J Med* 2017;377:1119–31.
- 70 Kouvas N, Kontogiannis C, Georgiopoulos G, *et al.* The complex crosstalk between inflammatory cytokines and ventricular arrhythmias. *Cytokine* 2018;111:171–7.
- 71 Aschar-Sobbi R, Izaddoustdar F, Korogyi AS, *et al.* Increased atrial arrhythmia susceptibility induced by intense endurance exercise in mice requires TNF α . *Nat Commun* 2015;6:6018.
- 72 Chang S-L, Hsiao Y-W, Tsai Y-N, *et al.* Interleukin-17 enhances cardiac ventricular remodeling via activating MAPK pathway in ischemic heart failure. *J Mol Cell Cardiol* 2018;122:69–79.
- 73 Fernández-Sada E, Torres-Quintanilla A, Silva-Platas C, *et al.* Proinflammatory cytokines are soluble mediators linked with ventricular arrhythmias and contractile dysfunction in a rat model of metabolic syndrome. *Oxid Med Cell Longev* 2017;2017:1–12.

- 74 Backhed F, Ding H, Wang T, *et al.* The gut microbiota as an environmental factor that regulates fat storage. *Proc Natl Acad Sci U S A* 2004;101:15718–23.
- 75 Li Z *et al.* Probiotics and antibiotics to TNF inhibit inflammatory activity and improve nonalcoholic fatty liver disease. *Hepatology* 2003;37:343–50.
- 76 Looma R, Seguritan V, Li W, *et al.* Gut Microbiome-Based metagenomic signature for non-invasive detection of advanced fibrosis in human nonalcoholic fatty liver disease. *Cell Metab* 2017;25:1054–62.
- 77 Caussy C, Tripathi A, Humphrey G, *et al.* A gut microbiome signature for cirrhosis due to nonalcoholic fatty liver disease. *Nat Commun* 2019;10:1406.
- 78 Schwimmer JB, Johnson JS, Angeles JE, *et al.* Microbiome signatures associated with steatohepatitis and moderate to severe fibrosis in children with nonalcoholic fatty liver disease. *Gastroenterology* 2019;157:1109–22.
- 79 Del Chierico F, Nobili V, Vernocchi P, *et al.* Gut microbiota profiling of pediatric nonalcoholic fatty liver disease and obese patients unveiled by an integrated metagenomics-based approach. *Hepatology* 2017;65:451–64.
- 80 Da Silva HE, Teterina A, Comelli EM, *et al.* Nonalcoholic fatty liver disease is associated with dysbiosis independent of body mass index and insulin resistance. *Sci Rep* 2018;8:1466.
- 81 Iino C, Endo T, Mikami K, *et al.* Significant decrease in Faecalibacterium among gut microbiota in nonalcoholic fatty liver disease: a large BMI- and sex-matched population study. *Hepatology* 2019;13:748–56.
- 82 Zhang Y, Xu J, Wang X, *et al.* Changes of intestinal bacterial microbiota in coronary heart disease complicated with nonalcoholic fatty liver disease. *BMC Genomics* 2019;20:862.
- 83 Hoyles L, Fernández-Real J-M, Federici M, *et al.* Molecular phenomics and metagenomics of hepatic steatosis in non-diabetic obese women. *Nat Med* 2018;24:1070–80.
- 84 Caussy C, Hsu C, Lo M-T, *et al.* Link between gut-microbiome derived metabolite and shared gene-effects with hepatic steatosis and fibrosis in NAFLD. *Hepatology* 2018;68:918–32.
- 85 Sookoian S, Salatino A, Castaño GO, *et al.* Intrahepatic bacterial metataxonomic signature in non-alcoholic fatty liver disease. *Gut* 2020;69:1483–91.
- 86 Carpino G, Del Ben M, Pastori D, *et al.* Increased liver localization of lipopolysaccharides in human and experimental non-alcoholic fatty liver disease. *Hepatology* 2019.
- 87 Scorletti E, Afolabi PR, Miles EA, *et al.* Synbiotics alter fecal Microbiomes, but not liver fat or fibrosis, in a randomized trial of patients with nonalcoholic fatty liver disease. *Gastroenterology* 2020.
- 88 Koeth RA, Lam-Galvez BR, Kirsop J, *et al.* L-Carnitine in omnivorous diets induces an atherogenic gut microbial pathway in humans. *J Clin Invest* 2019;129:373–87.
- 89 Wang Z, Bergeron N, Levison BS, *et al.* Impact of chronic dietary red meat, white meat, or non-meat protein on trimethylamine N-oxide metabolism and renal excretion in healthy men and women. *Eur Heart J* 2019;40:583–94.
- 90 Wang Z, Klipfell E, Bennett BJ, *et al.* Gut flora metabolism of phosphatidylcholine promotes cardiovascular disease. *Nature* 2011;472:57–63.
- 91 Tang WHW, Wang Z, Levison BS, *et al.* Intestinal microbial metabolism of phosphatidylcholine and cardiovascular risk. *N Engl J Med* 2013;368:1575–84.
- 92 Schiattarella GG, Sannino A, Toscano E, *et al.* Gut microbe-generated metabolite trimethylamine-N-oxide as cardiovascular risk biomarker: a systematic review and dose-response meta-analysis. *Eur Heart J* 2017;38:2948–56.
- 93 Qi J, You T, Li J, *et al.* Circulating trimethylamine N-oxide and the risk of cardiovascular diseases: a systematic review and meta-analysis of 11 prospective cohort studies. *J Cell Mol Med* 2018;22:185–94.
- 94 Wu C, Xue F, Lian Y, *et al.* Relationship between elevated plasma trimethylamine N-oxide levels and increased stroke injury. *Neurology* 2020;94:e667–77.
- 95 Roncal C, Martínez-Aguilar E, Orbe J, *et al.* Trimethylamine-N-Oxide (TMAO) predicts cardiovascular mortality in peripheral artery disease. *Sci Rep* 2019;9:15580.
- 96 Chen Y-ming, Liu Y, Zhou R-fen, *et al.* Associations of gut-flora-dependent metabolite trimethylamine-N-oxide, betaine and choline with non-alcoholic fatty liver disease in adults. *Sci Rep* 2016;6:19076.
- 97 Zhu W, Gregory JC, Org E, *et al.* Gut microbial metabolite TMAO enhances platelet hyperreactivity and thrombosis risk. *Cell* 2016;165:111–24.
- 98 Roberts AB, Gu X, Buffa JA, *et al.* Development of a gut microbe-targeted nonlethal therapeutic to inhibit thrombosis potential. *Nat Med* 2018;24:1407–17.
- 99 Reiner MF, Müller D, Gobatto S, *et al.* Gut microbiota-dependent trimethylamine-N-oxide (TMAO) shows a U-shaped association with mortality but not with recurrent venous thromboembolism. *Thromb Res* 2019;174:40–7.
- 100 Meng G, Zhou X, Wang M, *et al.* Gut microbe-derived metabolite trimethylamine N-oxide activates the cardiac autonomic nervous system and facilitates ischemia-induced ventricular arrhythmia via two different pathways. *EBioMedicine* 2019;44:656–64.
- 101 Chen S, Henderson A, Petriello MC, *et al.* Trimethylamine N-oxide binds and activates PERK to promote metabolic dysfunction. *Cell Metab* 2019;30:1141–51.
- 102 Zhang X, Li Y, Yang P, *et al.* Trimethylamine-N-Oxide promotes vascular calcification through activation of NLRP3 (nucleotide-binding domain, Leucine-Rich-Containing family, pyrin Domain-Containing-3) inflammasome and NF- κ B (nuclear factor κ B) signals. *Arterioscler Thromb Vasc Biol* 2020;40:751–65.
- 103 Mechanick JI, Apovian C, Brethauer S, *et al.* Clinical practice guidelines for the perioperative nutrition, metabolic, and nonsurgical practice of patients undergoing bariatric procedures – 2019 update: cosponsored by american association of clinical endocrinologists/american college of endocrinology, the obesity society, american society for metabolic & bariatric surgery, obesity medicine association, and american society of anesthesiologists. *Endocrine Practice* 2019;25:1–75.
- 104 Mantovani A, Byrne CD, Scorletti E, *et al.* Efficacy and safety of anti-hyperglycaemic drugs in patients with non-alcoholic fatty liver disease with or without diabetes: an updated systematic review of randomized controlled trials. *Diabetes Metab* 2020. doi:10.1016/j.diabet.2019.12.007. [Epub ahead of print: 07 Jan 2020].
- 105 Targher G, Lonardo A, Byrne CD. Nonalcoholic fatty liver disease and chronic vascular complications of diabetes mellitus. *Nat Rev Endocrinol* 2018;14:99–114.
- 106 Mantovani A, Byrne CD, Bonora E, *et al.* Nonalcoholic fatty liver disease and risk of incident type 2 diabetes: a meta-analysis. *Diabetes Care* 2018;41:372–82.
- 107 Lonardo A, Lugari S, Ballestri S, *et al.* A round trip from nonalcoholic fatty liver disease to diabetes: molecular targets to the rescue? *Acta Diabetol* 2019;56:385–96.
- 108 de Groot PF, Frissen MN, de Clercq NC, *et al.* Fecal microbiota transplantation in metabolic syndrome: history, present and future. *Gut Microbes* 2017;8:253–67.
- 109 Smits LP, Kootte RS, Levin E, *et al.* Effect of vegan fecal microbiota transplantation on Carnitine- and Choline-Derived Trimethylamine-N-Oxide production and vascular inflammation in patients with metabolic syndrome. *J Am Heart Assoc* 2018;7. doi:10.1161/JAHA.117.008342. [Epub ahead of print: 26 Mar 2018].
- 110 Tontonoz P, Spiegelman BM. Fat and beyond: the diverse biology of PPAR γ . *Annu Rev Biochem* 2008;77:289–312.
- 111 Ahmadian M, Suh JM, Hah N, *et al.* Ppar signaling and metabolism: the good, the bad and the future. *Nat Med* 2013;19:557–66.
- 112 DeFronzo RA, Tripathy D, Schwenke DC, *et al.* Pioglitazone for diabetes prevention in impaired glucose tolerance. *N Engl J Med* 2011;364:1104–15.
- 113 Sung K-C, Wild SH, Byrne CD. Development of new fatty liver, or resolution of existing fatty liver, over five years of follow-up, and risk of incident hypertension. *J Hepatol* 2014;60:1040–5.
- 114 Preis SR, Hwang S-J, Coady S, *et al.* Trends in all-cause and cardiovascular disease mortality among women and men with and without diabetes mellitus in the Framingham heart study, 1950 to 2005. *Circulation* 2009;119:1728–35.
- 115 Haffner SM, Lehto S, Rönkämaa T, *et al.* Mortality from coronary heart disease in subjects with type 2 diabetes and in nondiabetic subjects with and without prior myocardial infarction. *N Engl J Med* 1998;339:229–34.
- 116 Beckman JA, Creager MA, Libby P. Diabetes and atherosclerosis: epidemiology, pathophysiology, and management. *JAMA* 2002;287:2570–81.
- 117 Dormandy JA, Charbonnel B, Eckland DJA, *et al.* Secondary prevention of macrovascular events in patients with type 2 diabetes in the proactive study (prospective pioglitazone clinical trial in macrovascular events): a randomised controlled trial. *Lancet* 2005;366:1279–89.
- 118 Erdmann E, Dormandy JA, Charbonnel B, *et al.* The effect of pioglitazone on recurrent myocardial infarction in 2,445 patients with type 2 diabetes and previous myocardial infarction: results from the proactive (proactive 05) study. *J Am Coll Cardiol* 2007;49:1772–80.
- 119 Wilcox R, Bousser M-G, Betteridge DJ, *et al.* Effects of pioglitazone in patients with type 2 diabetes with or without previous stroke: results from proactive (prospective pioglitazone clinical trial in macrovascular events 04). *Stroke* 2007;38:865–73.
- 120 Lincoff AM, Wolski K, Nicholls SJ, *et al.* Pioglitazone and risk of cardiovascular events in patients with type 2 diabetes mellitus: a meta-analysis of randomized trials. *JAMA* 2007;298:1180–8.
- 121 Liao H-W, Saver JL, Wu Y-L, *et al.* Pioglitazone and cardiovascular outcomes in patients with insulin resistance, pre-diabetes and type 2 diabetes: a systematic review and meta-analysis. *BMI Open* 2017;7:e013927.
- 122 Kernan WN, Viscoli CM, Furie KL, *et al.* Pioglitazone after ischemic stroke or transient ischemic attack. *N Engl J Med* 2016;374:1321–31.
- 123 Kernan WN, Viscoli CM, Dearborn JL, *et al.* Targeting pioglitazone hydrochloride therapy after stroke or transient ischemic attack according to pretreatment risk for stroke or myocardial infarction. *JAMA Neurol* 2017;74:1319–27.
- 124 Zhu J, Yu X, Zheng Y, *et al.* Association of glucose-lowering medications with cardiovascular outcomes: an umbrella review and evidence MAP. *Lancet Diabetes Endocrinol* 2020;8:192–205.
- 125 Cusi K, Orsak B, Bril F, *et al.* Long-Term pioglitazone treatment for patients with nonalcoholic steatohepatitis and prediabetes or type 2 diabetes mellitus: a randomized trial. *Ann Intern Med* 2016;165:305–15.
- 126 Sanyal AJ, Chalasani N, Kowdley KV, *et al.* Pioglitazone, vitamin E, or placebo for nonalcoholic steatohepatitis. *N Engl J Med* 2010;362:1675–85.
- 127 Belfort R, Harrison SA, Brown K, *et al.* A placebo-controlled trial of pioglitazone in subjects with nonalcoholic steatohepatitis. *N Engl J Med* 2006;355:2297–307.
- 128 Aithal GP, Thomas JA, Kaye PV, *et al.* Randomized, placebo-controlled trial of pioglitazone in nondiabetic subjects with nonalcoholic steatohepatitis. *Gastroenterology* 2008;135:1176–84.
- 129 Musso G, Cassader M, Paschetta E, *et al.* Thiazolidinediones and advanced liver fibrosis in nonalcoholic steatohepatitis: a meta-analysis. *JAMA Intern Med* 2017;177:633–40.

- 130 Glen J, Floros L, Day C, *et al.* Non-Alcoholic fatty liver disease (NAFLD): summary of NICE guidance. *BMJ* 2016;354:i4428.
- 131 Corey KE, Wilson LA, Altinbas A, *et al.* Relationship between resolution of non-alcoholic steatohepatitis and changes in lipoprotein sub-fractions: a post-hoc analysis of the PIVENS trial. *Aliment Pharmacol Ther* 2019;49:1205–13.
- 132 Nepelska M, de Wouters T, Jacouton E, *et al.* Commensal gut bacteria modulate phosphorylation-dependent PPAR γ transcriptional activity in human intestinal epithelial cells. *Sci Rep* 2017;7:43199.
- 133 Byndloss MX, Olsan EE, Rivera-Chávez F, *et al.* Microbiota-activated PPAR- γ signaling inhibits dysbiotic Enterobacteriaceae expansion. *Science* 2017;357:570–5.
- 134 Li J-M, Yu R, Zhang L-P, *et al.* Dietary fructose-induced gut dysbiosis promotes mouse hippocampal neuroinflammation: a benefit of short-chain fatty acids. *Microbiome* 2019;7:98.
- 135 DeFronzo RA, Inzucchi S, Abdul-Ghani M, *et al.* Pioglitazone: the forgotten, cost-effective cardioprotective drug for type 2 diabetes. *Diab Vasc Dis Res* 2019;16:133–43.
- 136 Kothari S, Dhimi-Shah H, Shah SR. Antidiabetic drugs and statins in nonalcoholic fatty liver disease. *J Clin Exp Hepatol* 2019;9:723–30.
- 137 Kim J, Lee H, An J, *et al.* Alterations in gut microbiota by statin therapy and possible intermediate effects on hyperglycemia and hyperlipidemia. *Front Microbiol* 2019;10:10.
- 138 Liu Y, Song X, Zhou H, *et al.* Gut Microbiome Associates With Lipid-Lowering Effect of Rosuvastatin *in Vivo*. *Front Microbiol* 2018;9:530.
- 139 Tuteja S, Ferguson JF. Gut microbiome and response to cardiovascular drugs. *Circ Genom Precis Med* 2019;12:421–9.
- 140 Athyros VG, Alexandrides TK, Bilianou H, *et al.* The use of statins alone, or in combination with pioglitazone and other drugs, for the treatment of non-alcoholic fatty liver disease/non-alcoholic steatohepatitis and related cardiovascular risk. An expert panel statement. *Metabolism* 2017;71:17–32.
- 141 Nascimbeni F, Aron-Wisnewsky J, Pais R, *et al.* Statins, antidiabetic medications and liver histology in patients with diabetes with non-alcoholic fatty liver disease. *BMJ Open Gastroenterol* 2016;3:e000075.
- 142 Arnett DK, Blumenthal RS, Albert MA, *et al.* ACC/AHA guideline on the primary prevention of cardiovascular disease: a report of the American College of Cardiology/American heart association Task force on clinical practice guidelines. *J Am Coll Cardiol* 2019;2019:e177–232.
- 143 Sigler MA, Congdon L, Edwards KL. An evidence-based review of statin use in patients with nonalcoholic fatty liver disease. *Clin Med Insights Gastroenterol* 2018;11:117955221878750.
- 144 Singh S, Singh PP, Singh AG, *et al.* Statins are associated with a reduced risk of hepatocellular cancer: a systematic review and meta-analysis. *Gastroenterology* 2013;144:323–32.
- 145 Griffin SJ, Leaver JK, Irving GJ. Impact of metformin on cardiovascular disease: a meta-analysis of randomised trials among people with type 2 diabetes. *Diabetologia* 2017;60:1620–9.
- 146 Singh S, Singh PP, Singh AG, *et al.* Anti-Diabetic medications and the risk of hepatocellular cancer: a systematic review and meta-analysis. *Am J Gastroenterol* 2013;108:881–91.
- 147 Cunha V, Cotrim HP, Rocha R, *et al.* Metformin in the prevention of hepatocellular carcinoma in diabetic patients: a systematic review. *Ann Hepatol* 2019. doi:10.1016/j.aohep.2019.10.005. [Epub ahead of print: 28 Nov 2019].
- 148 Vallianou NG, Stratigou T, Tsagarakis S. Metformin and gut microbiota: their interactions and their impact on diabetes. *Hormones* 2019;18:141–4.
- 149 Wu H, Esteve E, Tremaroli V, *et al.* Metformin alters the gut microbiome of individuals with treatment-naïve type 2 diabetes, contributing to the therapeutic effects of the drug. *Nat Med* 2017;23:850–8.
- 150 Armstrong MJ, Gaunt P, Aithal GP, *et al.* Liraglutide safety and efficacy in patients with non-alcoholic steatohepatitis (lean): a multicentre, double-blind, randomised, placebo-controlled phase 2 study. *Lancet* 2016;387:679–90.
- 151 Kristensen SL, Rørth R, Jhund PS, *et al.* Cardiovascular, mortality, and kidney outcomes with GLP-1 receptor agonists in patients with type 2 diabetes: a systematic review and meta-analysis of cardiovascular outcome trials. *Lancet Diabetes Endocrinol* 2019;7:776–85.
- 152 Wang Z, Saha S, Van Horn S, *et al.* Gut microbiome differences between metformin- and liraglutide-treated T2DM subjects. *Endocrinol Diabetes Metab* 2018;1:e00009.
- 153 Kluger AY, Tecson KM, Lee AY, *et al.* Class effects of SGLT2 inhibitors on cardiorenal outcomes. *Cardiovasc Diabetol* 2019;18:99.
- 154 McMurray JJV, Solomon SD, Inzucchi SE, *et al.* Dapagliflozin in patients with heart failure and reduced ejection fraction. *N Engl J Med* 2019;381:1995–2008.
- 155 Neuschwander-Tetri BA, Loomba R, Sanyal AJ, *et al.* Farnesoid X nuclear receptor ligand obeticholic acid for non-cirrhotic, non-alcoholic steatohepatitis (Flint): a multicentre, randomised, placebo-controlled trial. *Lancet* 2015;385:956–65.
- 156 Younossi ZM, Ratziu V, Loomba R, *et al.* Obeticholic acid for the treatment of non-alcoholic steatohepatitis: interim analysis from a multicentre, randomised, placebo-controlled phase 3 trial. *Lancet* 2019;394:2184–96.
- 157 Zhang D-Y, Zhu L, Liu H-N, *et al.* The protective effect and mechanism of the FXR agonist obeticholic acid via targeting gut microbiota in non-alcoholic fatty liver disease. *Drug Des Devel Ther* 2019;13:2249–70.
- 158 Friedman ES, Li Y, Shen T-CD, *et al.* FXR-Dependent modulation of the human small intestinal microbiome by the bile acid derivative obeticholic acid. *Gastroenterology* 2018;155:1741–52.
- 159 Ratziu V, Harrison SA, Francque S, *et al.* Elafibranor, an Agonist of the Peroxisome Proliferator-Activated Receptor- α and - δ , Induces Resolution of Nonalcoholic Steatohepatitis Without Fibrosis Worsening. *Gastroenterology* 2016;150:1147–59.
- 160 Zein CO, Yerian LM, Gogate P, *et al.* Pentoxifylline improves nonalcoholic steatohepatitis: a randomized placebo-controlled trial. *Hepatology* 2011;54:1610–9.
- 161 Van Wagner LB, Koppe SWP, Brunt EM, *et al.* Pentoxifylline for the treatment of non-alcoholic steatohepatitis: a randomized controlled trial. *Ann Hepatol* 2011;10:277–86.